

LANDSCAPE MASTERPLAN

TLA SUBMISSION

15126.5-Branxton Town Centre-MP_D

BRANXTON TOWN CENTRE PUBLIC DOMAIN

CESSNOCK CITY COUNCIL

11 September 2024

CONTENTS



01

ANALYSIS

Study of the existing



Local Context

Local Analysis

Site Character

History & Heritage

Vegetation Communities

02

VISION

Study of the proposed



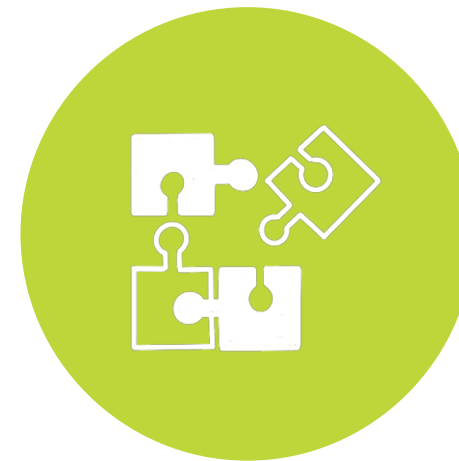
Landscape Vision

Materials

03

MASTERPLAN

We have a plan



Landscape Masterplan

Masterplan: Key Areas

Entry Detail

Pocket Park

RV Site Detail

Northern Park Detail

Stage Detail

Eastern Park Detail

04

STRATEGIES

Study of plan



Circulation

Furniture

Tree Canopy

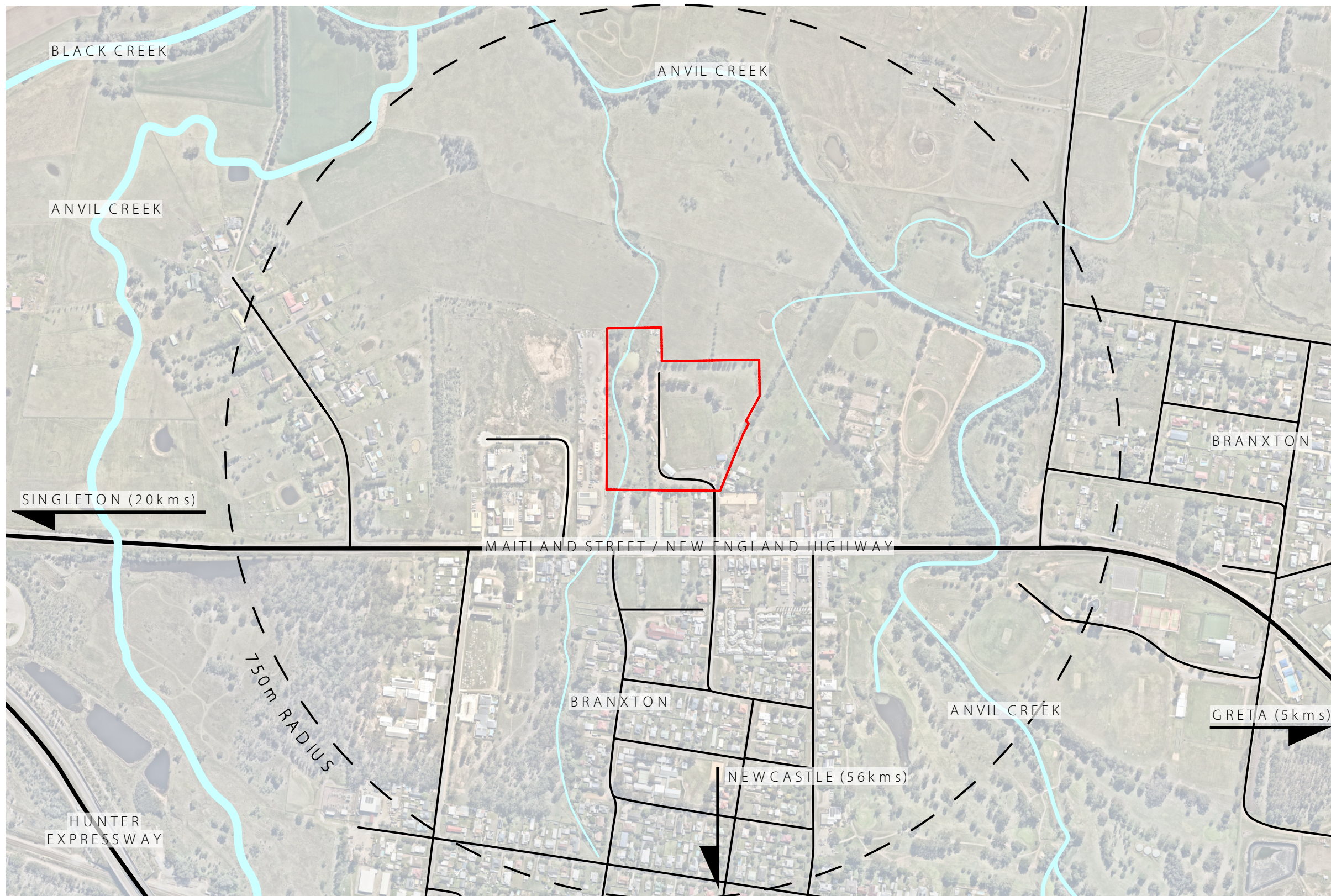
Planting Palette

Connection to Country

Acknowledgement of Country

Terras acknowledge the Traditional Custodians of the lands on which we work and live. We pay our respects to the elders, past, present and emerging and recognise their continuing connection to country and contribution to this land.

LOCAL CONTEXT



LEGEND

	WAT
	ROAD - SEALED & UN
	MAJO
	MINO

SITE ANALYSIS

The site is located in Branxton. Branxton is a small township in the Hunter Region of NSW in the City of Cessnock on the New England Highway between Maitland and Singleton.

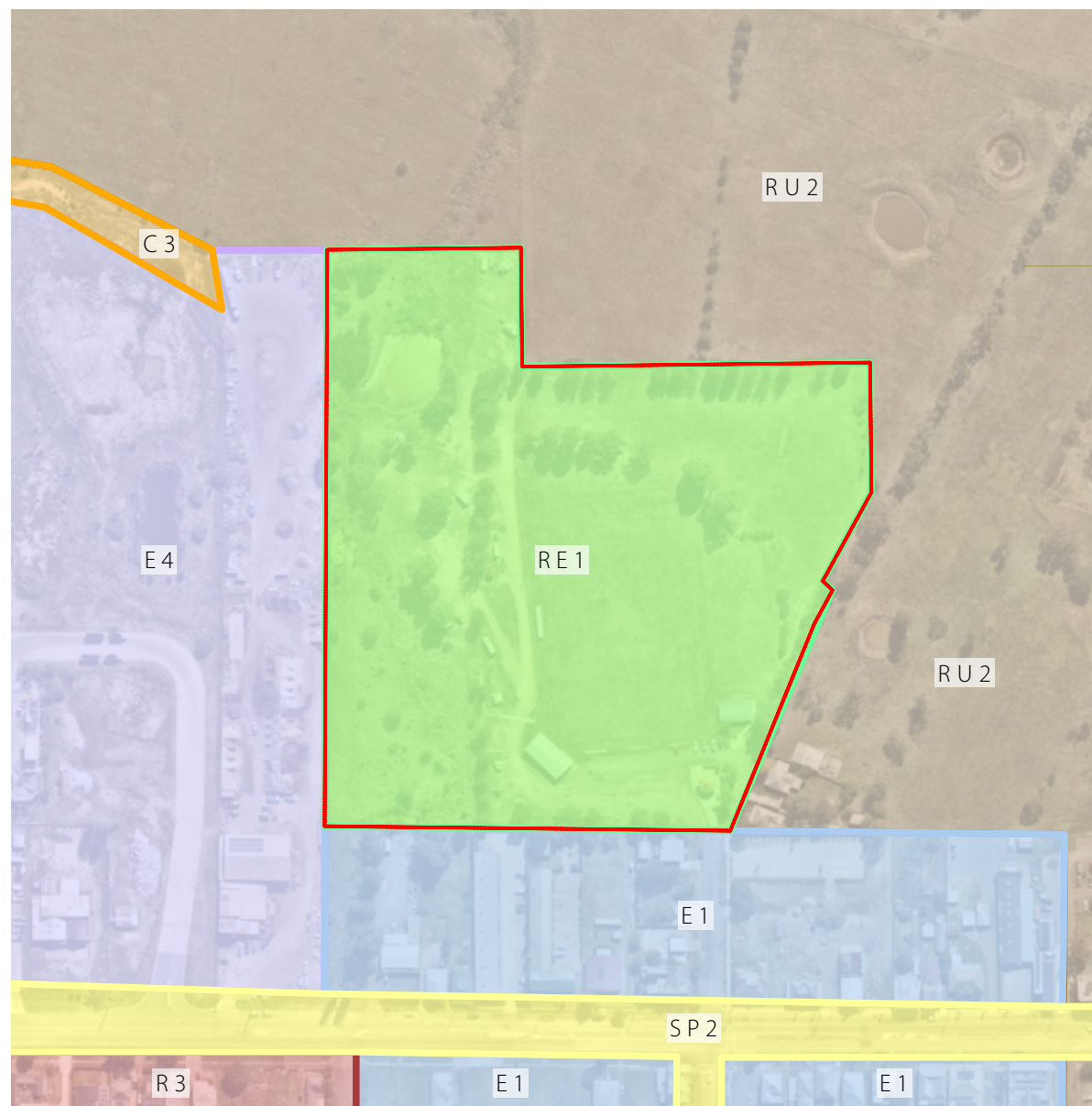
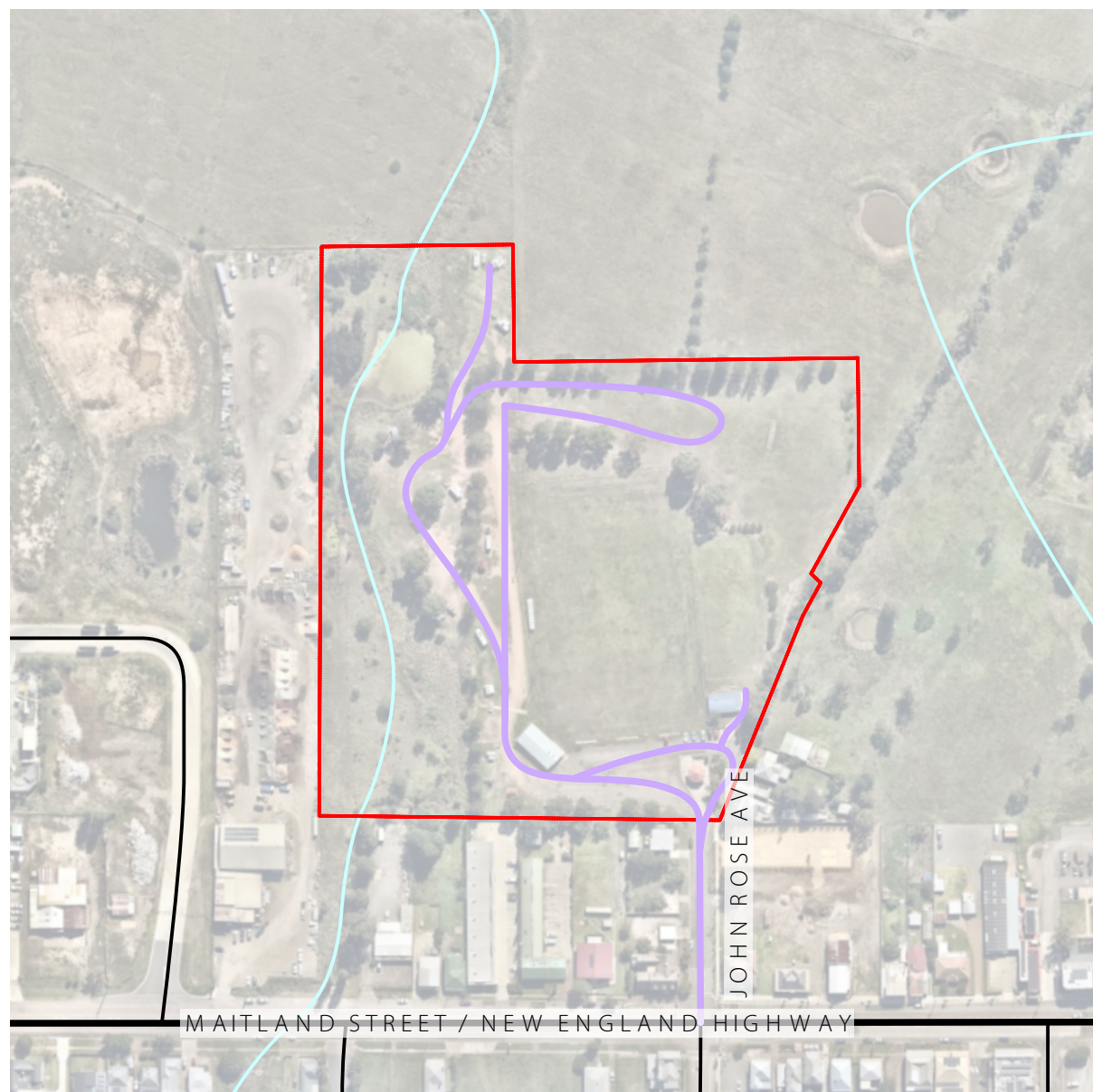
The site contains an existing RV use site and sportfield area. The site will be accessible via the southern boundary interface with John Rose Avenue, connecting to Maitland Street/New England Highway.

The site is bordered directly to the east by an existing oval and croquet club, and to the west by Blue Gum Landscaping Centre.

Due to topography, a permanent water and vegetated corridor spans the western boundary that branches off Anvil Creek to the north.



LOCAL ANALYSIS



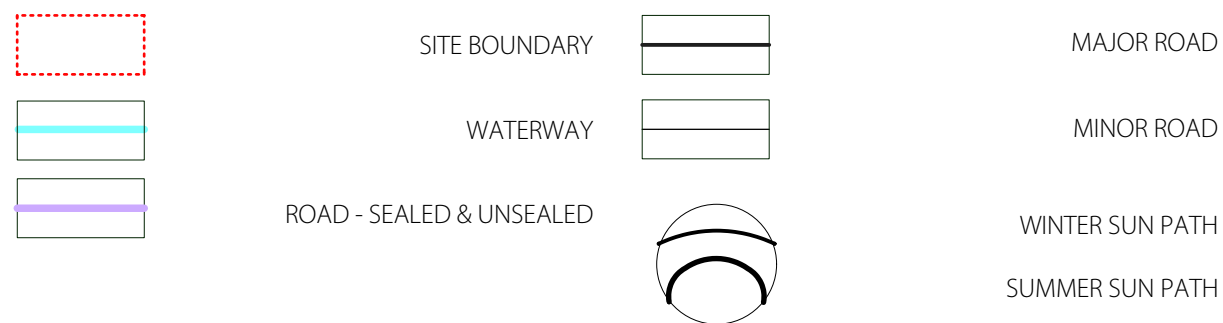
NOTES

Vehicular access to the site is restricted to one entry/exit point from John Rose Avenue.

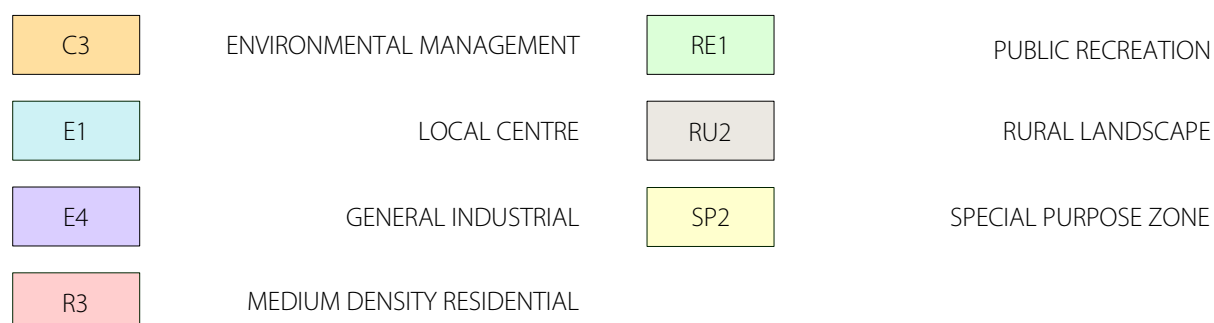
Formalised access terminates at the Branxton Oval public amenities building, an informal dirt road provides access from here to the existing informal Branxton RV camp to the north and overflow car parking to Branxton Oval.

The land is zoned RE1 - Public Recreation by Cessnock City Council. The surrounding land zoning use is characterised by business and rural landscape such as E1 - Local Centre, E4 - General Industrial and RU2 - Rural Landscape.

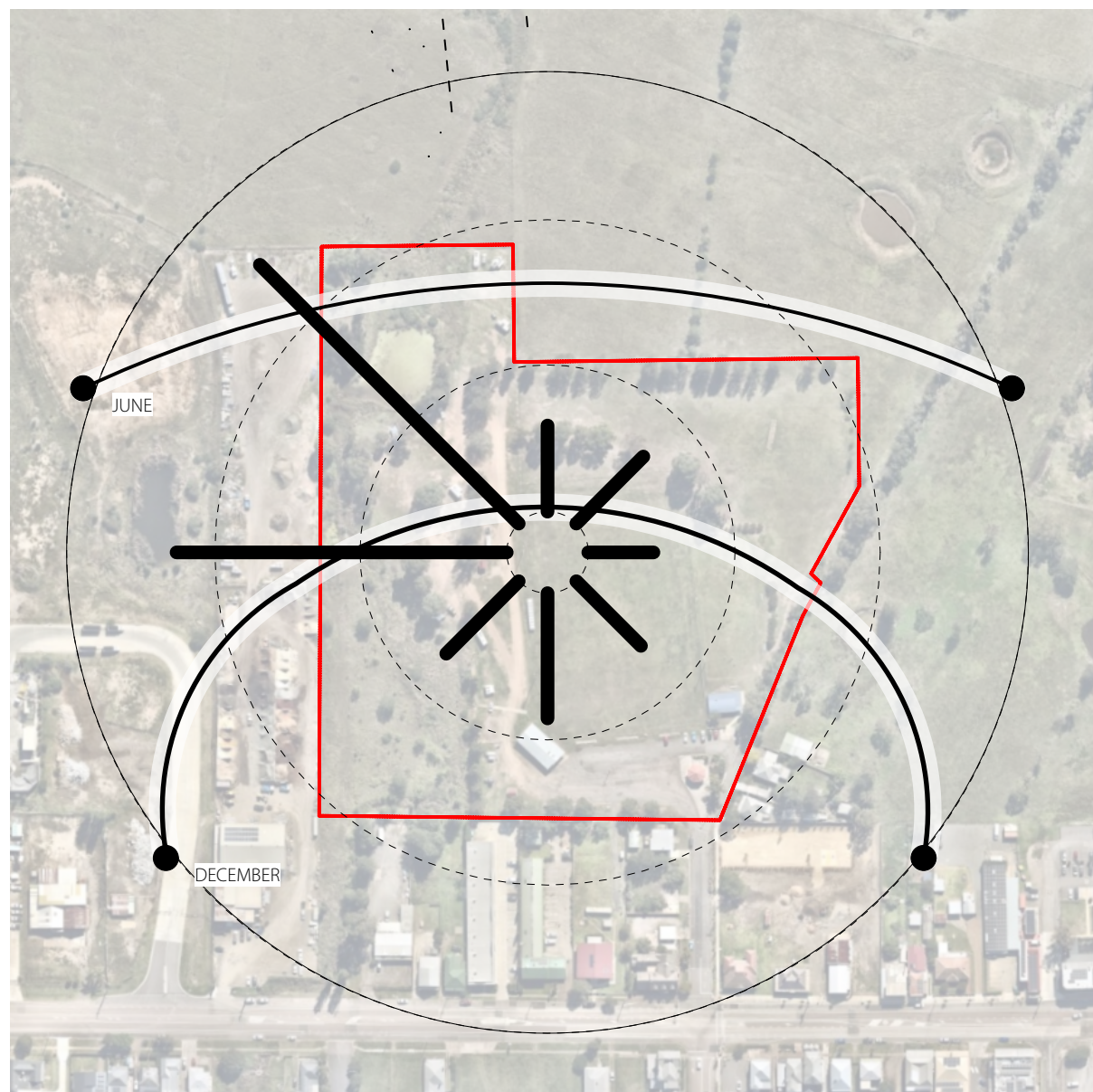
EXISTING CIRCULATION



ZONING / SPATIAL TYPES



LOCAL ANALYSIS



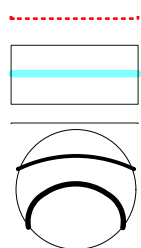
NOTES

Wind of the Hunter Region can be largely categorised by its north-western and western direction.

Sun calculations demonstrate a low sun angle with shorter days in Winter, making north-eastern to north-western sun access vital during this time. Summer sun is dictated by a higher sun angle with longer days.

The topography of the land can be seen to be mostly flat in the eastern portion containing the oval. The western edge of the site is characterised by a vegetated corridor with permanent water in the northern portion.

NATURAL SYSTEMS



WATERW
WINTER SUN PATH
SUMMER SUN PATH

TOPOGRAPHY



WATERW
CONTOURS FROM SURVERY



SITE CHARACTER



View of sportfield from rear of site, looking south

NOTES

- The surrounding land is characteristic of a rural landscape and township flat terrain and scattered trees.
- The current site is largely informal in nature, with scattered trees and informal roads and paths.
- A vegetated corridor lies on the western boundary of the site with a permanent water body in the north west.



Existing, informal RV area, looking north



Looking north along western boundary



View of existing permanent water to western boundary with surrounding vegetation

HISTORY & HERITAGE

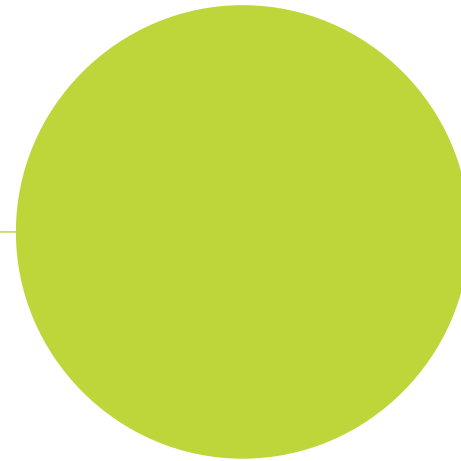
ANCIENT AND GEOLOGICAL CONTEXT



From volcanic eruptions, to the laying of coal measures, sea fluctuations, to the development of the Hunter River Systems, the Branxton Formation has seen an **ancient and geological context influenced by water.**

Branxton Formation was dictated by water to form an imbedded **sandstone and siltstone** history alongside a rich **coal** measure that fuelled an extensive underground coal mining industry in the late 19th century until the early 20th century.

FIRST NATIONS PEOPLE



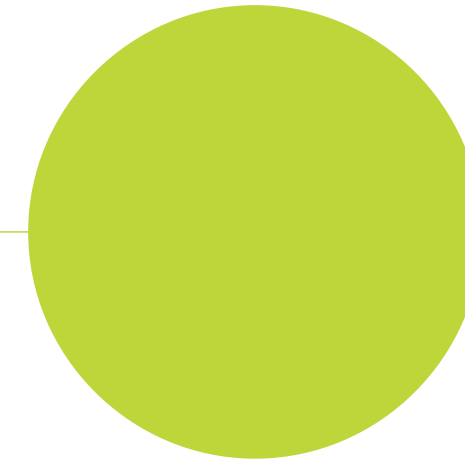
The Wonnarua people are the traditional custodians of the lands surrounding Wallis Creek. The **Wonnarua** people define their Country as the **people of the hills and plains with a strong connection to water.**

The dreamtime story from the Wonnarua tells of the formation of the hills, valleys, forests, rivers and all living things of the Hunter Valley by the Great Spirit Baiame. The river represented the keeper of life that flowed through the land to sustain the life created. The river is where the Great Spirit Baiame is strongest.

Another dreaming site of the Hunter Region is related to Tiddalik the Frog. The dreamtime story tells of a giant frog who selfishly exploited the river resource for his own thirst, only to be made to laugh by the other animals to burst with water to replenish the river. As a consequence of his greedy actions, he was turned to stone and hasn't moved from the Wollombi since.

Water is a central connection for Wonnarua people to their Country. The movement of water throughout Country is reflected through a deep respect the Wonnarua people have for the land and a harmonisation of living to the needs of others without exploitation of the landscape's resources

EUROPEAN OVERLAY



Branxton, formerly known as Farmborough and Black Creek, during European settlement, was central to the rise and fall of 'the coalfields'. 'The Coalfields' described the rapid growth of population of established collieries across Hunter Valley in the late 19th century.

Prior to the establishment of the Hunter Expressway bypass, the township thrived as a major traffic corridor from Sydney to Brisbane. Today, Branxton is largely characterised by its residential fabric and historical European buildings.



PRE-CLEARING VEGETATION COMMUNITIES

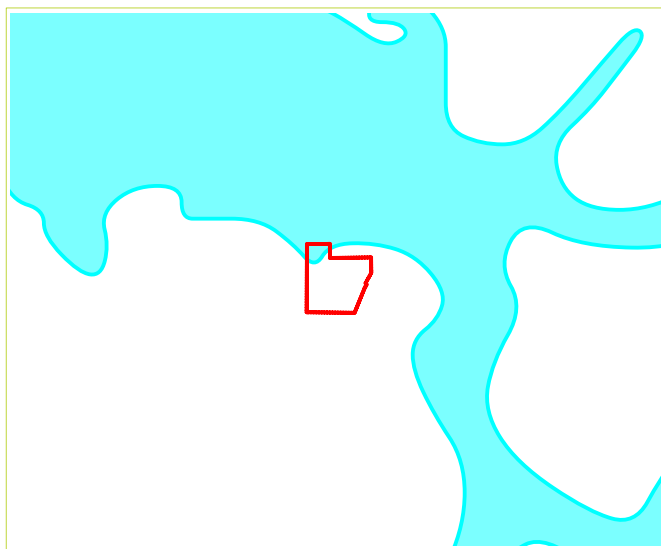


VEGETATION TYPE 1

Red Gum Forest (ID: 4089)

A very tall sclerophyll and Casuarina forest to open forest or woodland with a mid-stratum that is absent or sparse and a grassy ground layer, found on alluvial floodplains of the upper Hunter and Namoi river catchments. The canopy almost always includes *Eucalyptus camaldulensis*. There is usually no mid-stratum in this Plant Community Type (PCT). The dense ground layer is mainly comprised of grasses and forbs and primarily occurs along the Hunter River and its tributaries between Singleton and Scone (Trees Near Me 2024).

Species present include, but are not limited to:
Canopy: *Brachychiton populneus*, *Casuarina cunninghamiana*, *Eucalyptus camaldulensis*
Ground-Stratum: *Breyenia oblongifolia*, *Carex appressa*

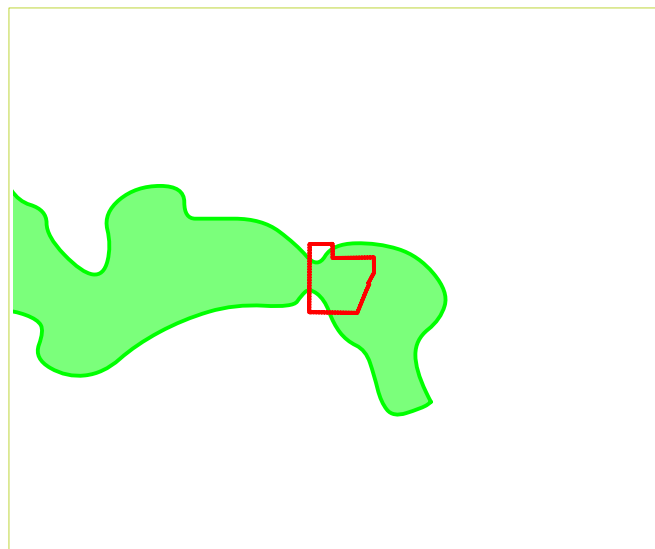


VEGETATION TYPE 2

Ironbark Grassy Woodland (ID: 3431)

A tall sclerophyll open forest or woodland with a sparse cover of dry shrubs and a mid-dense grassy ground layer that occurs mainly on the undulating floor of the central Hunter valley with scattered areas on adjoining ranges. The canopy very frequently includes *Eucalyptus crebra*. The mid-stratum very frequently includes only a sparse cover. The mid-dense ground layer is mainly comprised of a high diversity of grasses and forbs with some graminoids, twiners, hardy ferns, low-growing shrubs and sedges (Trees Near Me 2024).

Species present include, but are not limited to:
Canopy: *Corymbia maculata*, *Eucalyptus albens*, *Eucalyptus blakelyi*
Mid-Stratum: *Notelaea microcarpa*
Ground-Stratum: *Bursaria spinosa*, *Lomandra confertifolia*

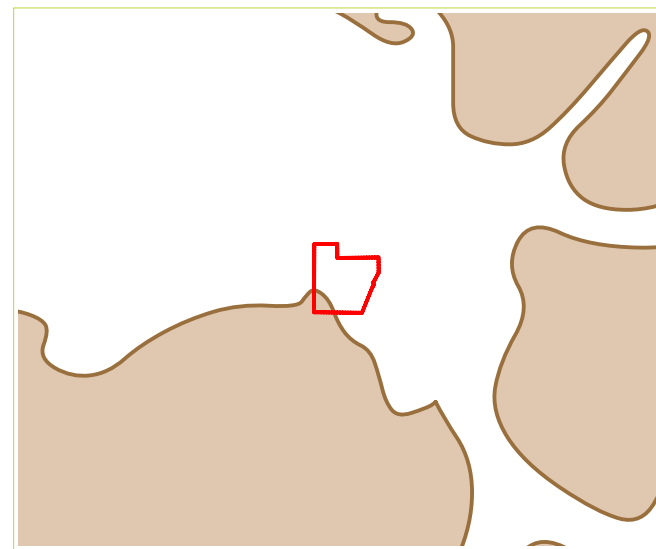


VEGETATION TYPE 3

Ironbark-Spotted Gum Forest (ID: 3315)

A tall sclerophyll open forest with dry shrubs and a ground cover of grasses and graminoids occurring on moderately fertile soils on lower slopes of hills in the central Hunter valley to the west of Newcastle from North Rothbury to Lake Liddell. The canopy almost always includes ironbarks. The mid-dense ground layer typically includes a diverse array of graminoids, forbs and a hardy fern (Trees Near Me 2024).

Species present include, but are not limited to:
Canopy Species: *Eucalyptus crebra*, *Corymbia maculata*
Mid-Stratum: *Acacia parvipinnula*
Ground-Stratum: *Daviesia ulicifolia*, *Lomandra multiflora*, *Dianella revoluta* and *Microlaena stipoides*, *Hardenbergia violacea*



LANDSCAPE VISION

CONNECTION TO COUNTRY



As a landscape architecture practice that deals with land, places, culture, history and the natural environment, everything we do is on Country and it is our responsibility to care for country. We are committed to understand more about the Traditional Owners of this land, and their deep cultural connections to Country. Our ambition is to:

- Reduce the impacts of natural events through sustainable land and water use practices
- Value and respect Aboriginal cultural knowledge and language and engage with truth
- Ensure Country is cared for appropriately and sensitive sites are protected

HUMAN CONNECTIONS



Provide legible and easily accessible links through the site at a human scale to encourage walking and cycling. Creating opportunities for active and passive recreation and a variety of recreation experiences.

The environments in which we live profoundly affect us. Positive relationships and connections to natural and built landscapes impact our health and well-being in a variety of ways. Including reducing stress and minimizing anxiety.

It is our intention to foster connections for the people to Live, Work, Play, Gather, and Learn.

CLIMATE POSITIVE DESIGN



As stewards of the environment, landscape architects must advocate for climate positive outcomes. As designers of the built environment we need to ensure the future of our planet by reducing carbon footprints and increasing sequestration. CPD can mean:

- Retention of as many trees on site as possible
- Reduce demolition and recycle and reuse materials
- Reduce the extent of high carbon elements
- Maximise soft surfaces and soil root plate volumes
- Increase biodiversity
- Design for longevity
- Utilise WSUD principles

SITE SPECIFIC DESIGN

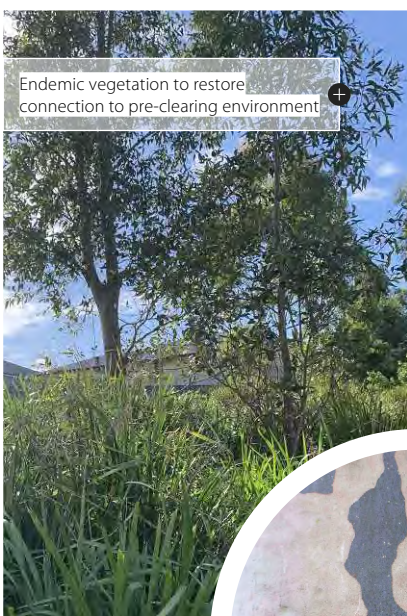


Design which preserves, enhances, and creates strong visual and physical connections to the natural features inherent to the site, whether they are a stand of trees, the topography of a site, a body of water, or a distant view.

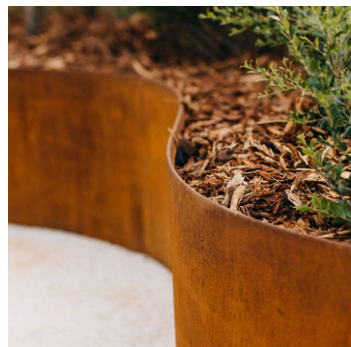
LANDSCAPE VISION

To create carefully considered landscape initiatives that pay respect and reconnect to the site's entire history and its meaningful relationship to water, land and connection. Whilst also celebrating the creation of a sense of place for its future intended purpose.

MATERIALS



Endemic vegetation to restore connection to pre-clearing environment



NOTES

The proposed material palette is inspired by the history and heritage of the site and use of materials relating to sandstone and steel.

Sandstone is proposed to be used in a variety of ways throughout the site with the introduction of corten to create interest as a naturally weathering material.

Planting of endemic vegetation will help to create a sense of place unique to the site with swathes of native grasses proposed to reinforce movement and the site's relationship to water.



Sealed sandstone logs as informal seating



Shade structure and stage for future events



Open turf area with scattered shade trees

LANDSCAPE MASTERPLAN



MASTERPLAN

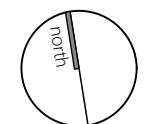


NOTES

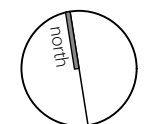
1. Access to new recreation area via John Rose Avenue off Maitland Road.
2. Branxton public amenities block to be upgraded.
3. Branxton Oval to be retained. Outside edge to be redesigned. Upgraded fencing and lighting.
4. Existing wetland and grassland biome to be retained and protected. Retain as native vegetation and perform biosecurity matter control as required. Weed and revegetate as required to protect and maintain environment.
5. Additional trees planted to boundary edge to screen neighbours.
6. Break in fencing and bench seating for emergency and maintenance vehicular access from carpark. Removable bollards to concrete pad.
7. Upgraded fencing to oval edge. Concrete pad to bench seating. Seating furniture as per Branxton Town Centre Masterplan.
8. Sealed parking to the oval
9. Sealed road for access around site. To be coordinated with hydraulic engineer in flood zone.
10. Lighting to be 24V powered and connected to mains power.
11. Existing trees to be removed.
12. Existing trees to be retained.
13. Nominated RV parking. Refer RV Site Detail
14. Smaller RV Sites with no allocated vehicle space.
15. Indicative informal/overflow carparking
16. 3m wide, sealed share path
17. Northern park area with jetty. Refer separate detail
18. Eastern Park. Refer separate detail
19. Proposed stage area. Refer separate detail
20. Smaller trees to reduce shade on RV solar panels as per Community Feedback
21. Fencing to define boundary edge
22. Gate between the sports field and Croquet Club to allow lawn mower access

LEGEND

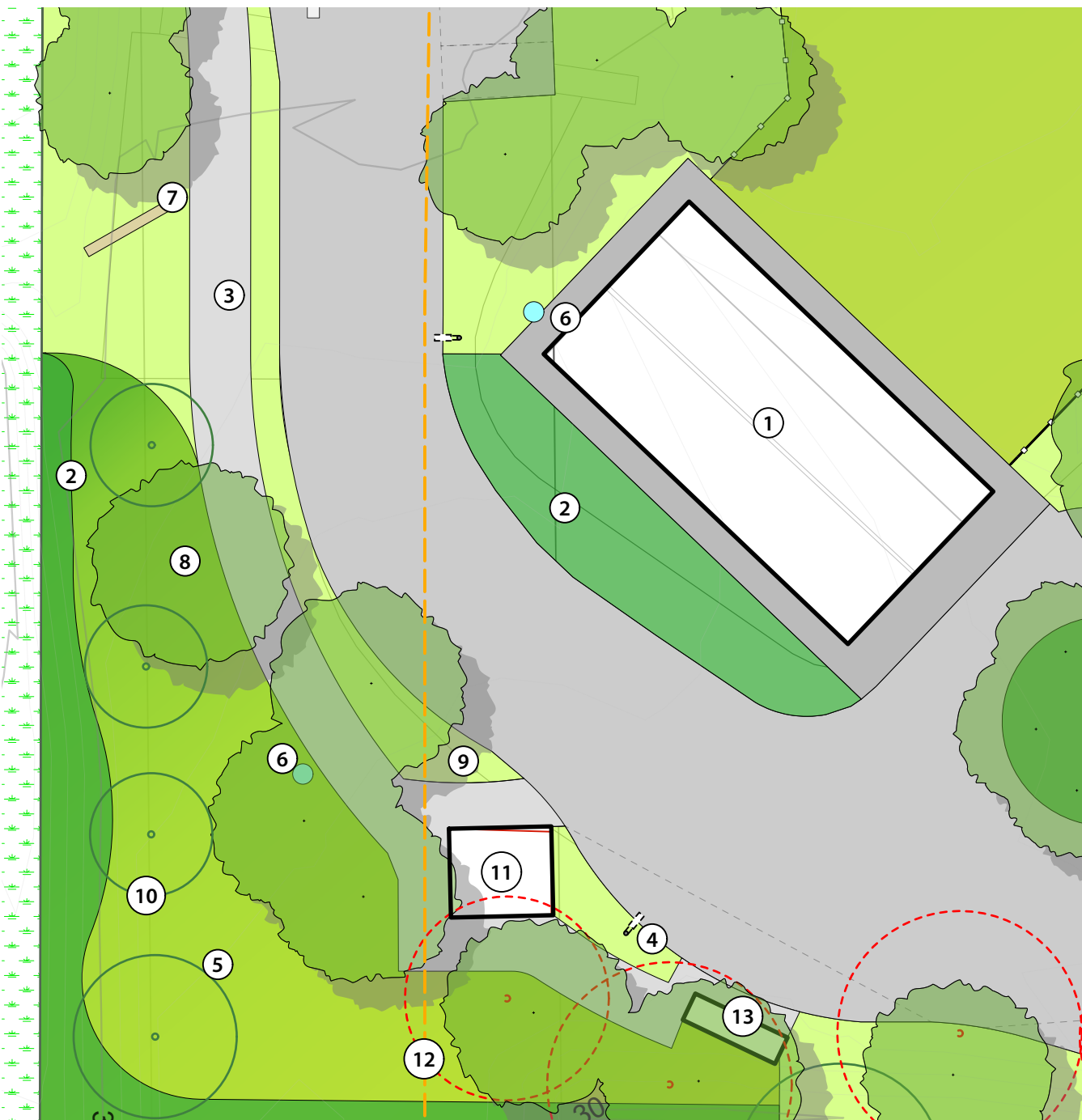
- EXISTING TREES TO BE REMOVED
- EXISTING TREES TO BE RETAINED
- PROPOSED TREE PLANTINGS
- EXISTING WETLAND TO BE REVEGETATED
- EXISTING STRUCTURE TO BE RETAINED
- TURF AREA
- AWNING ALLOWANCE
- MASS PLANTING
- CONCRETE PATH
- INDICATIVE WATER & ELECTRICITY POINT
- INDICATIVE STREET LIGHT LOCATION
- PROPOSED PICNIC SHELTER
- SANDSTONE LOG
- POND VIEWING PLATFORM, SUGGESTED FRP GRATING



MASTERPLAN: KEY AREAS



ENTRY DETAIL



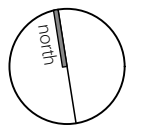
NOTES

1. Branxton public amenities block to be upgraded.
2. Native grass, low maintenance mass planting to frame entry point to RV area. Species such as *Lomandra longifolia*, *Poa labillardierei*, *Ficinia nodosa*, *Lomandra confertifolia*.
3. 3m wide sharepath from waste disposal to RV area.
4. Indicative street light placement.
5. Entry park as informal rest area and entry threshold
6. Indicative water point location.
7. Entry signage at threshold. Sandstone wall with corten lettering and lighting behind.
8. New scattered, native trees to park.
9. Turf verge to road edge
10. Existing trees to be retained.
11. Existing picnic shelter to be retained. Mains lighting to be incorporated.
12. Supplementary planting where existing trees are to be removed.
13. Waste disposal.

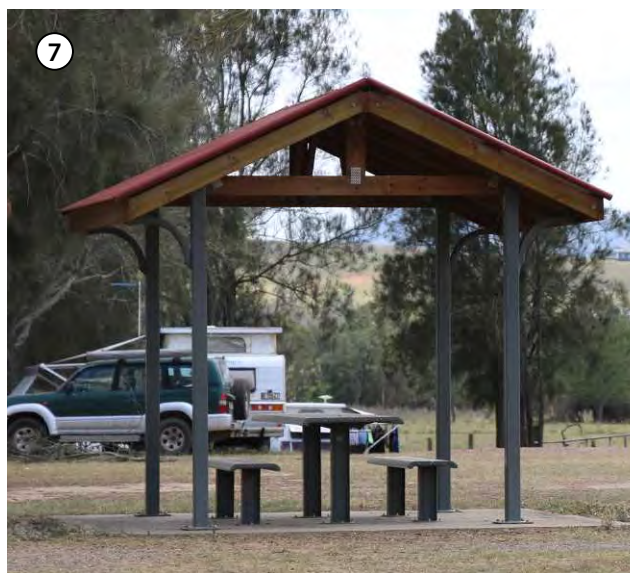
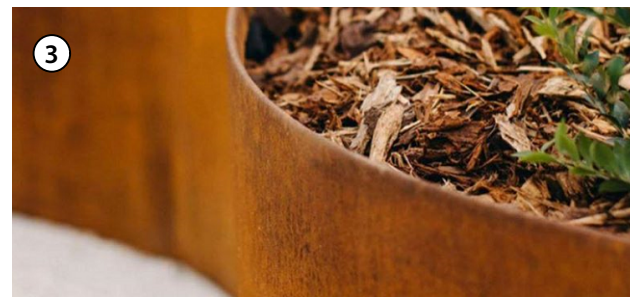
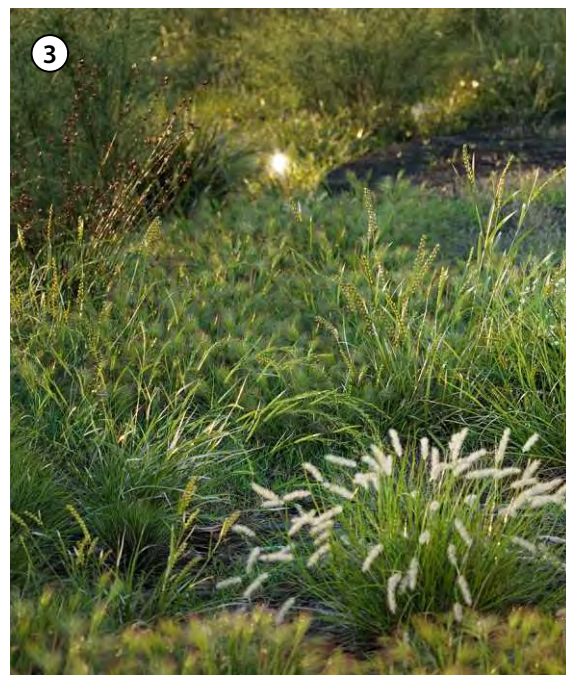
LEGEND

- EXISTING TREES TO BE REMOVED
- EXISTING TREES TO BE RETAINED
- PROPOSED TREE PLANTINGS
- EXISTING WETLAND TO BE REVEGETATED
- EXISTING STRUCTURE TO BE RETAINED
- TURF AREA
- AWNING ALLOWANCE
- MASS PLANTING
- CONCRETE PATH
- INDICATIVE WATER & ELECTRICITY POINT
- INDICATIVE STREET LIGHT LOCATION
- PROPOSED PICNIC SHELTER
- SANDSTONE LOG

1 ENTRY DETAIL
Scale: 1:300



POCKET PARK DETAIL



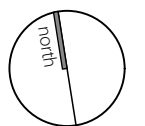
NOTES

1. Seating nodes along path to provide space for rest and views to wetland corridor.
2. 3m wide share path to provide formal pedestrian and cycle access around site from carpark while also providing edge to wetland corridor.
3. Native grasses, low maintenance mass planting to feature areas. Species such as *Lomandra longifolia*, *Poa labillardierei*, *Ficinia nodosa*, *Lomandra confertifolia*.
4. Trees in turf to prevent vehicular parking within bushfire zone.
5. Sealed, sandstone log bollards to provide edge and informal seating.
6. Pocket Park for informal rest and play.
7. Existing picnic shelter to be retained with new lighting and water point.
8. New trees to define park edge with native grass underplanting and corten steel edging.
9. Potential for sculptural art piece to park. Opportunity for local artist engagement and First Nations design insertion.
10. Existing tree to be retained.

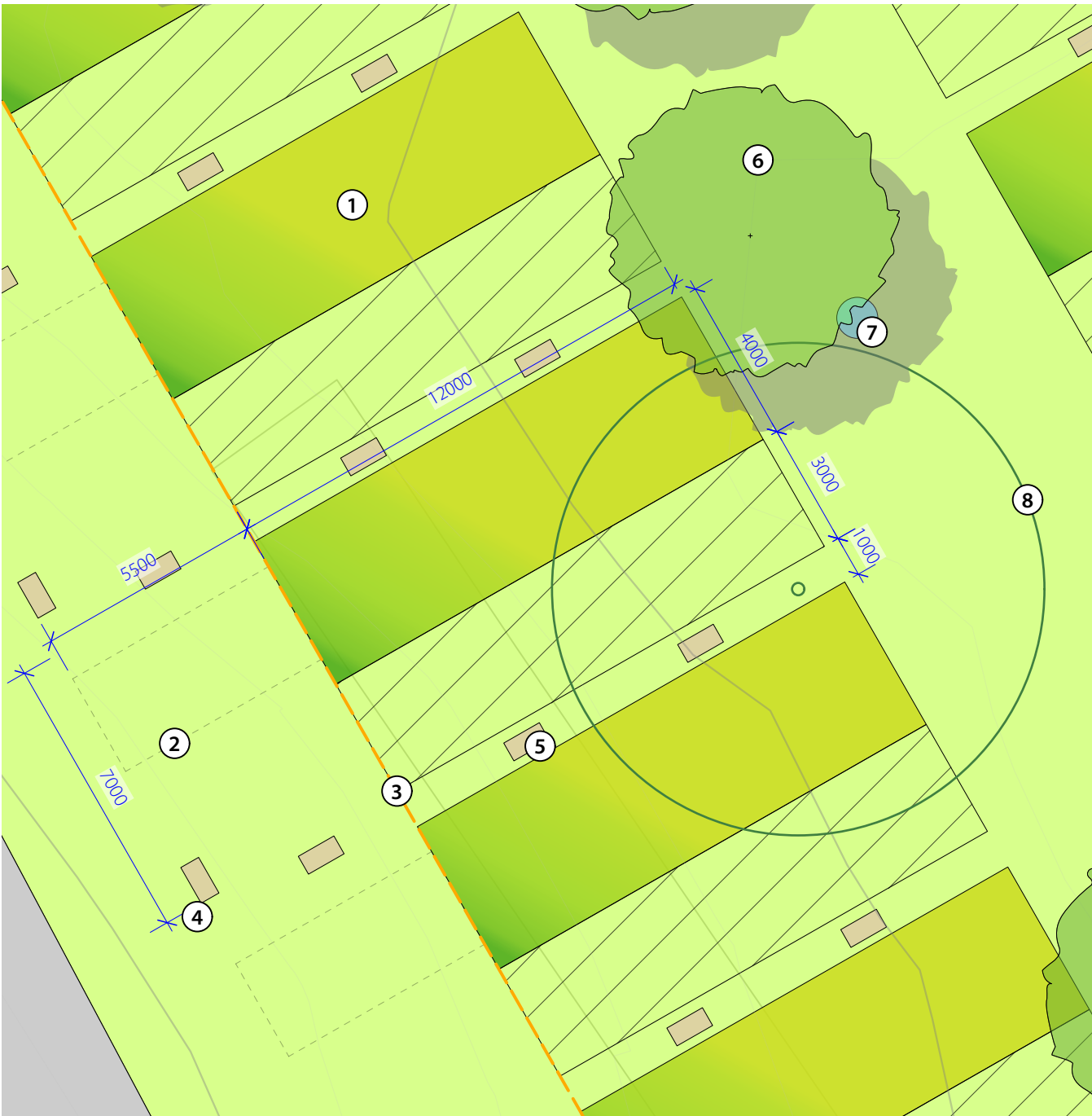
LEGEND

- EXISTING TREES TO BE REMOVED
- EXISTING TREES TO BE RETAINED
- PROPOSED TREE PLANTINGS
- EXISTING WETLAND TO BE REVEGETATED
- EXISTING STRUCTURE TO BE RETAINED
- TURF AREA
- AWNING ALLOWANCE
- MASS PLANTING
- CONCRETE PATH
- INDICATIVE WATER & ELECTRICITY POINT
- INDICATIVE STREET LIGHT LOCATION
- PROPOSED PICNIC SHELTER
- SANDSTONE LOG

1 POCKET PARK DETAIL
Scale: 1:300



RV SITE DETAIL

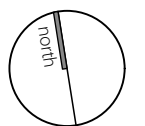


NOTES

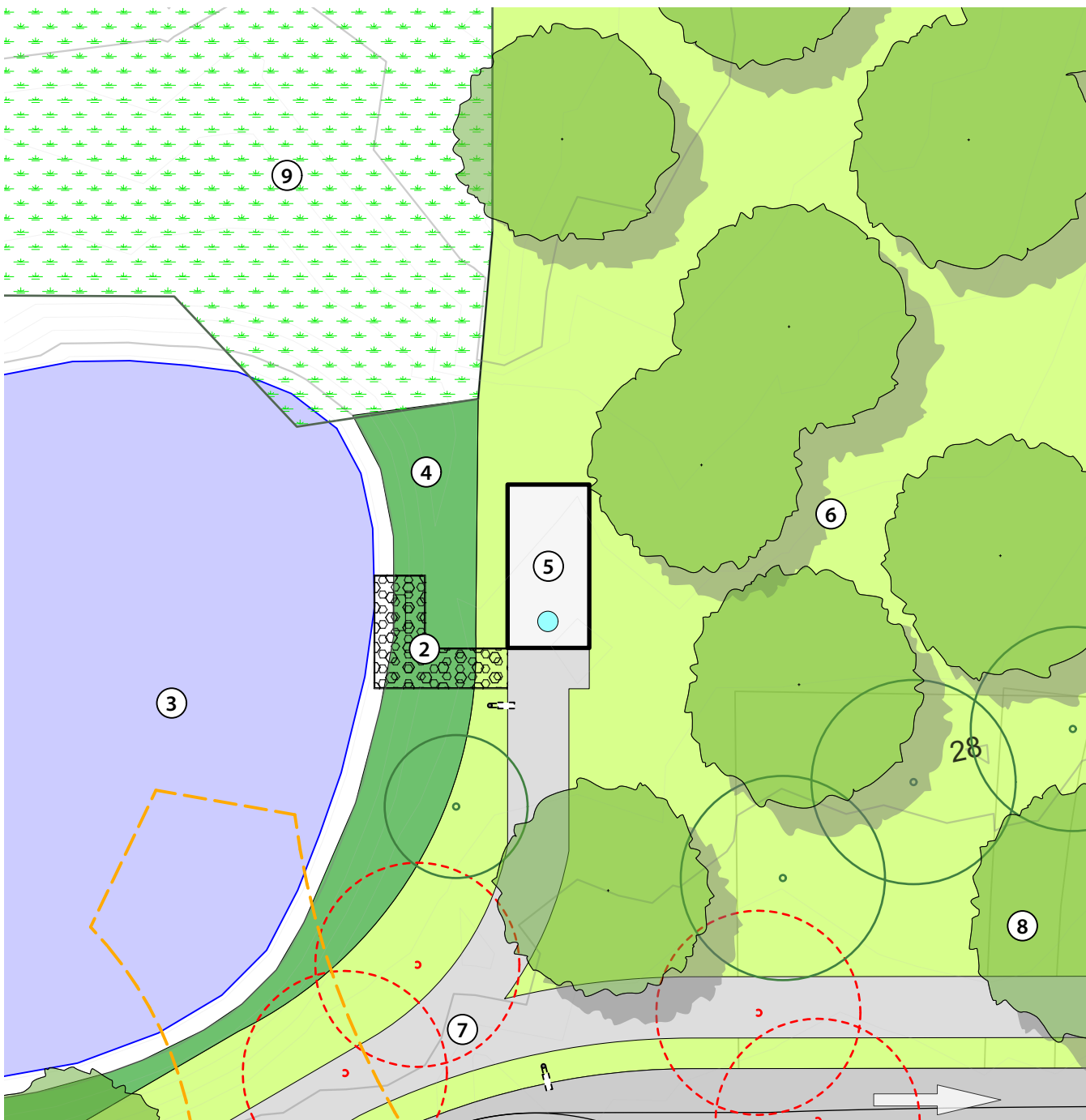
- 20 nominated sites for RV parking. Located outside the bushfire zone. 48m² (12m x 4m). Sites with space for parking in front and 3m wide awnings expansion to side of site.
- Allocated vehicular space for each site
- RV Sites to be located outside bushfire protection zone
- Each site number to be identified by sandstone log with corten plaque to front of site near road. To coordinate with entry signage and material use around site.
- Sandstone logs between sites to define edge
- New, small, scattered trees to provide edge and shade, whilst allowing sun for RV solar panels, as per Community Feedback
- Indicative water and electricity point
- Existing tree to be retained

LEGEND

- EXISTING TREES TO BE RETAINED
- PROPOSED TREE PLANTINGS
- TURF AREA
- AWNING ALLOWANCE
- INDICATIVE WATER & ELECTRICITY POINT
- SANDSTONE LOG



NORTHERN PARK DETAIL



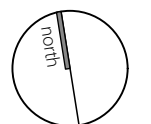
NOTES

- Existing wetland and grassland biome to be retained and protected. Weed and revegetate as required to protect and maintain environment.
- Pier to pond with seating.
- Pond within wetland environment to be retained. Weeded and revegetated to encourage habitat and amenity
- Existing interface to be weeded and clearly defined
- New Landmark Pro Brighton Series double shelter with BBQ, picnic table, water point and mains power for lighting.
- Open turf area with scattered trees provides picnic area away from camping space.
- 3m wide share path
- Existing and new trees to provide natural bollard restricting access to parking in bushfire zone.
- Existing wetland and grassland biome to be retained and protected. Retain as native vegetation and perform biosecurity matter control as required. Weed and revegetate as required to protect and maintain environment.

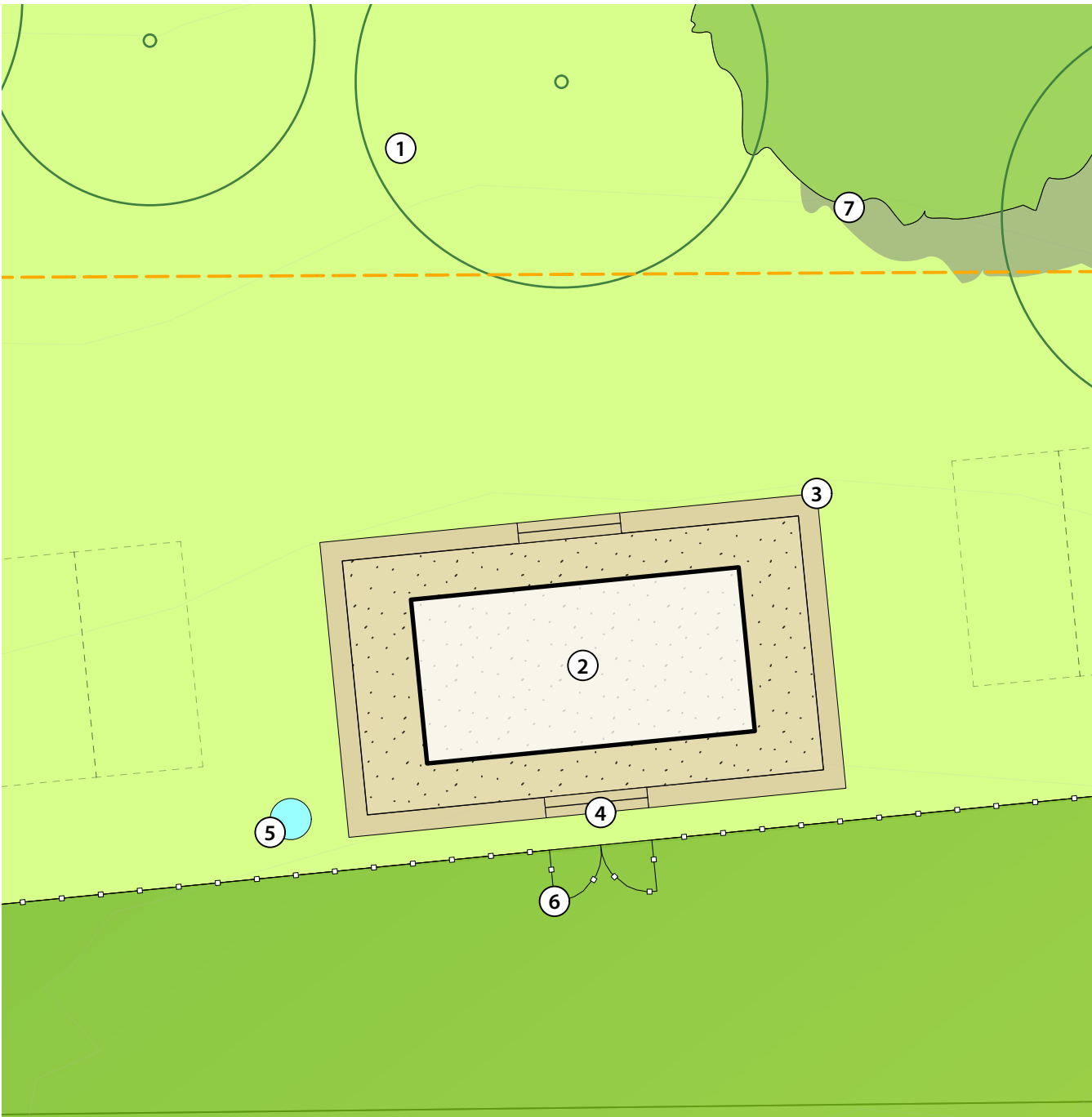
LEGEND

- EXISTING TREES TO BE REMOVED
- EXISTING TREES TO BE RETAINED
- PROPOSED TREE PLANTINGS
- EXISTING WETLAND TO BE REVEGETATED
- TURF AREA
- MASS PLANTING
- CONCRETE PATH
- INDICATIVE WATER & ELECTRICITY POINT
- INDICATIVE STREET LIGHT LOCATION
- PROPOSED PICNIC SHELTER
- SANDSTONE LOG
- POND VIEWING PLATFORM, SUGGESTED FRP GRATING

1 NORTHERN PARK DETAIL
Scale: 1:300



STAGE DETAIL

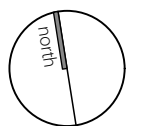


NOTES

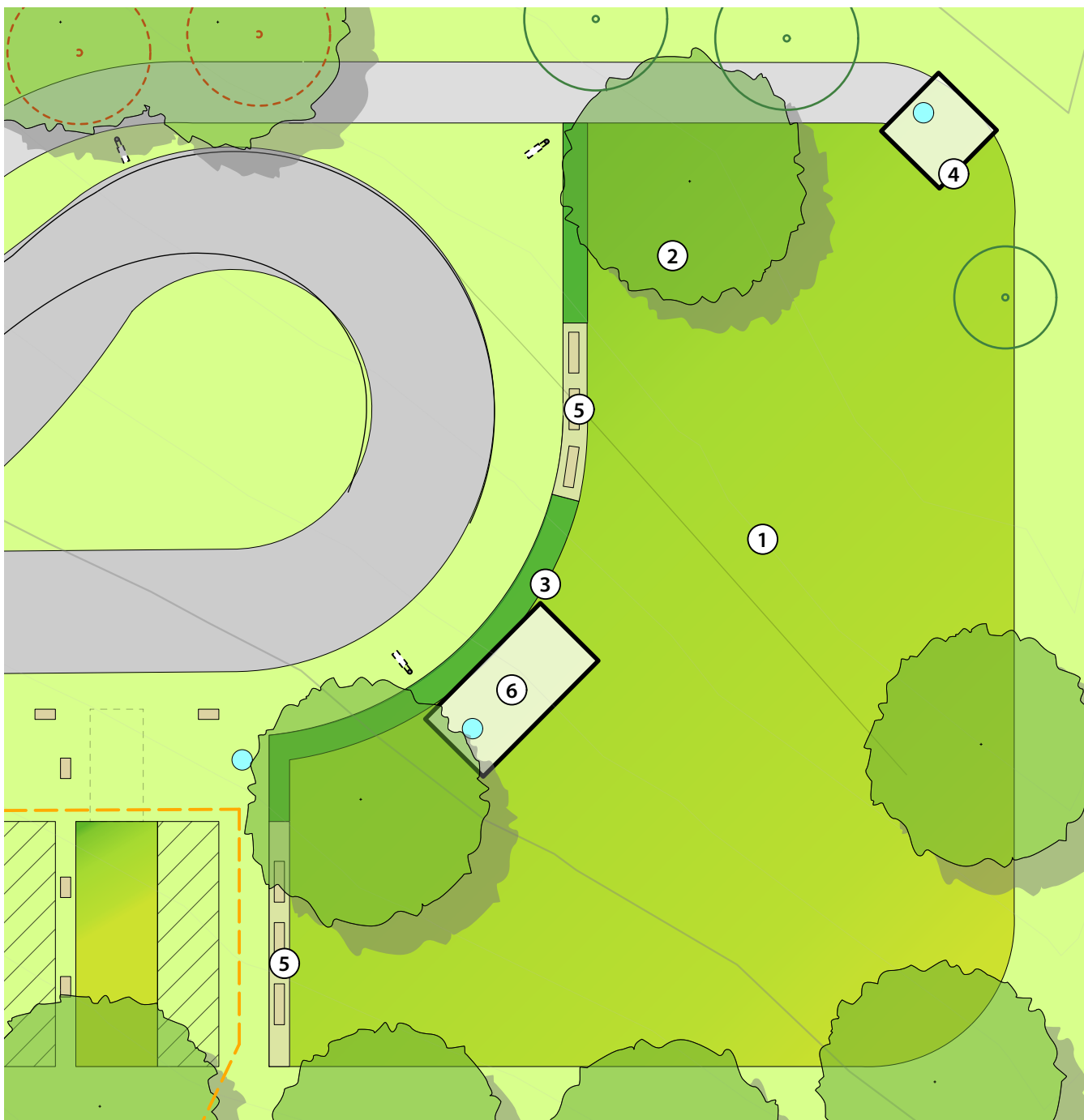
- Existing and proposed scattered trees for shade to turf area and potential market stall location near stage
- Landmark Pro Brighton Shelter, connected to mains power and lighting to end of oval.
- Sandstone retaining to raised earth platform with finished decogranite top. Sandstone steps to match retaining, sealed to avoid mould and algae.
- Double intereference to open turf area for market events and oval interface for presentations.
- Suggested water point location
- Gate to upgraded oval fencing as direct access to stage from oval.
- Large native shade tree.

LEGEND

- EXISTING TREES TO BE RETAINED
- PROPOSED TREE PLANTINGS
- TURF AREA
- SANDSTONE LOG









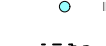
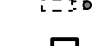


EASTERN PARK DETAIL

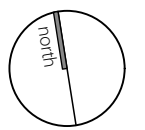


NOTES

1. Open turf area with scattered trees provides picnic area away from camping space.
2. Scattered endemic and native trees.
3. Native grass mix, low maintenance mass planting. To feature areas. Species such as *Lomandra longifolia*, *Poa labillardierei*, *Ficinia nodosa*, *Lomandra confertifolia*.
4. New Landmark Pro Brighton Series picnic shelters with water and lighting connected to mains power.
5. Sandstone logs to prevent parking within bushfire zone.
6. New Landmark Pro Brighton Series double shelter with BBQ, picnic table, water point and mains power for lighting. As per Community Feedback.

LEGEND

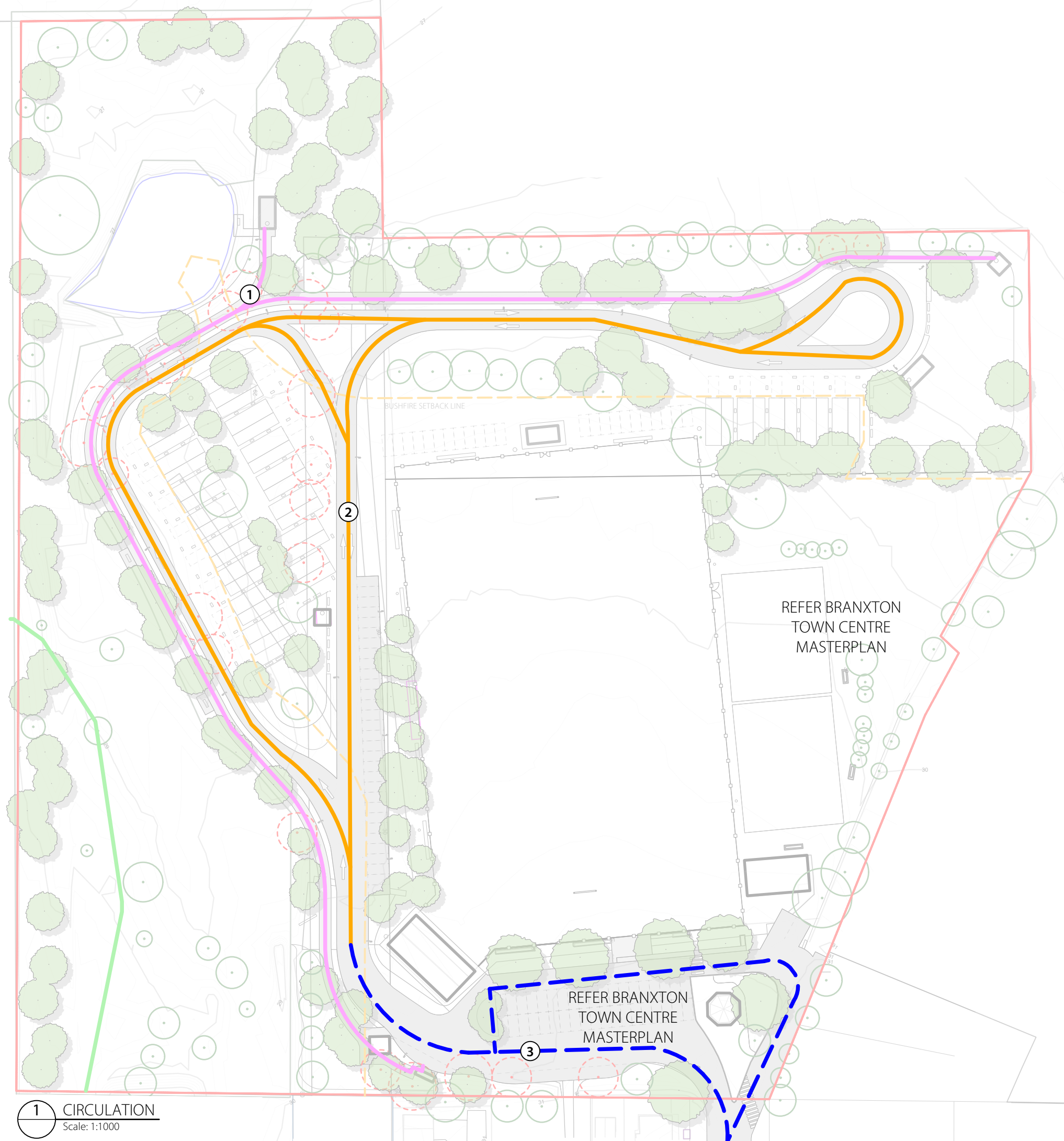
-  EXISTING TREES TO BE REMOVED
-  EXISTING TREES TO BE RETAINED
-  PROPOSED TREE PLANTINGS
-  TURF AREA
-  MASS PLANTING
-  CONCRETE PATH
-  INDICATIVE WATER & ELECTRICITY POINT
-  INDICATIVE STREET LIGHT LOCATION
-  PROPOSED PICNIC SHELTER
-  SANDSTONE LOG



LANDSCAPE STRATEGIES



CIRCULATION

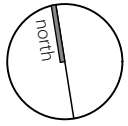


- NOTES**
1. 3m wide share path to loop site and connect RV sites to activated green spaces.
 2. Proposed sealed roads for formal, RV circulation paths and vehicular movement
 3. Circulation to entry of RV Area as per Branxton Town Centre Masterplan, by others.

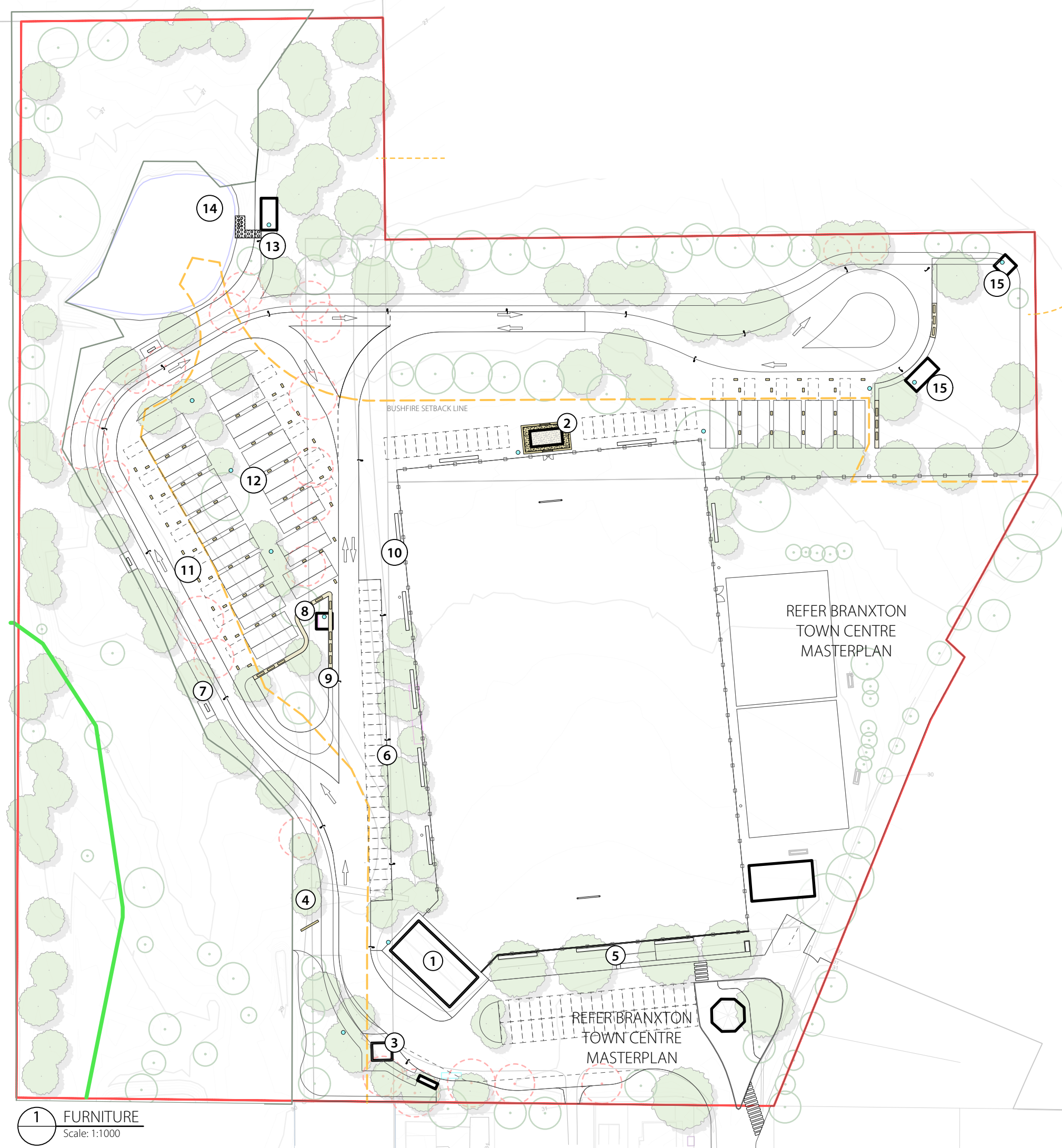
LEGEND

	PROPOSED 3M SHARE PATH
	PROPOSED SEALED ROAD, VEHICULAR
	PROPOSED ROAD, BY OTHERS.
	CONCRETE PATH
	COMPACTED GRAVEL

1 CIRCULATION
Scale: 1:1000




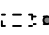


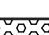
FURNITURE



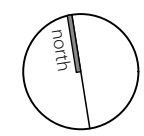
NOTES

1. Braxton public amenities block to be upgraded.
2. Shade structure atop raised earth mound stage with water and power point.
3. Existing shade structure to be retained.
4. Proposed entry signage
5. Bench seating with concrete pads to edge of sportfield as per the Braxton Town Centre Masterplan, by others. Concrete pad from carpark to oval with removable bollards.
6. Lighting connected to mains power to formal carpark and RV road and sharepath.
7. Seating node as per the Braxton Town Centre Masterplan.
8. Existing structure to be retained. Mains power and water point to be connected.
9. Sealed sandstone logs on compressed decogranite as informal bollards and threshold to park area
10. Proposed bench seating to match those previously nominated in Braxton Town Centre Masterplan, by others.
11. Sandstone log and corten plaque to identify RV sites
12. Sandstone boulders as informal features to define RV site boundaries
13. Proposed shade structure with lighting and water access point. BBQ and picnic seating underneath for interface with the open park space and wetland area.
14. Pond viewing platform with seating to view wetland environment.
15. Proposed shade structure with water and power point for lighting, picnic shelter, BBQ and seating.

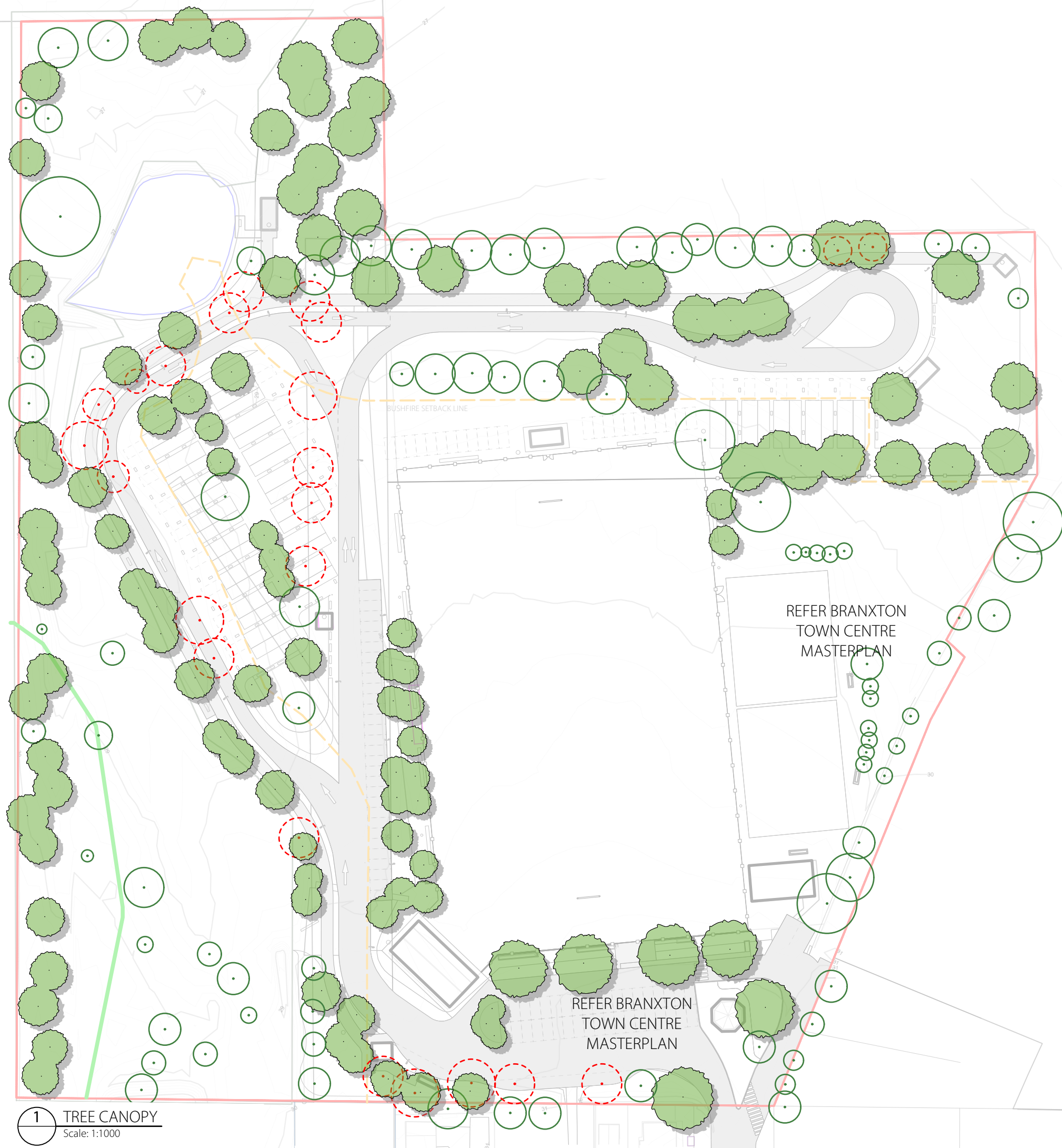
LEGEND

-  EXISTING STRUCTURE TO BE RETAINED
-  INDICATIVE STREET LIGHT LOCATION
-  PROPOSED PICNIC SHELTER
-  SANDSTONE LOG
-  POND VIEWING PLATFORM, SUGGESTED FRP GRATING

1 FURNITURE
Scale: 1:1000






TREE CANOPY



NOTES

Site area	55 326m ²
Existing canopy	5 646m ²
Existing canopy coverage	10.20%
Existing canopy retained	3 909m ²
Proposed canopy	9 135m ²
Proposed canopy coverage	23.58%

LEGEND

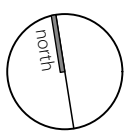
-  EXISTING TREES TO BE REMOVED
-  EXISTING TREES TO BE RETAINED
-  PROPOSED TREE PLANTINGS

REFER BRANXTON
TOWN CENTRE
MASTERPLAN

REFER BRANXTON
TOWN CENTRE
MASTERPLAN

BUSHFIRE SETBACK LINE

1 TREE CANOPY
Scale: 1:1000



PLANT PALETTE

TREES



Lophostemon confertus (N)



Brachychiton populneus (E)



Waterhousia floribunda (N)



Eucalyptus camaldulensis(E)



Eucalyptus crebra(E)



Corymbia maculata (E)

MASS PLANTING



Brachyscome multifida (E)



Myoporum parvifolium (N)



Chrysocephalum apiculatum (N)



Carex appressa (E)



Poa labillardieri (E)



Lomandra confertifolia (E)



Lomandra filiformis (E)



Ficinia nodosa

PLANT SCHEDULE - TREES

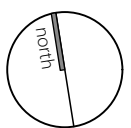
RV SITES					
ID	Botanical Name	Common Name	Height	Spread	Pot Size
LoCo-1	Lophostemon confertus	Brush Box	10000	8000	100L
WaFl	Waterhousia floribunda	Weeping Lilly Pilly	8000	5500	100L
CARPARK & AREA SURROUNDING OVAL					
ID	Botanical Name	Common Name	Height	Spread	Pot Size
NySy	Nyssa sylvatica	Sour Gum	18000	8500	75L
BrPo	Brachychiton populneus	Bottle Tree	10000	5000	75L
AcFr	Acer freemanii 'Autumn Blaze'	Lipstick Tree	15000	8000	75L
OPEN SPACES & SITE BORDERS					
ID	Botanical Name	Common Name	Height	Spread	Pot Size
EuCa	Eucalyptus camaldulensis	River Red Gum	20000	15000	75L
EuCr	Eucalyptus crebra	Narrow leaved Ironbark	20000	15000	75L
CoMa	Corymbia maculata	Spotted Gum	20000	15000	75L

PLANT SCHEDULE - FEATURE PLANTING

MASS PLANTING AREAS					
ID	Botanical Name	Common Name	Height	Spread	Pot Size
CaAp	Carex appressa	Tall Sedge	1000	1000	140mm
LoCo	Lomandra confertifolia	Mat-rush	1000	1000	140mm
LoLo	Lomandra longifolia	Spiny-headed Mat-Rush	1000	1000	140mm
PoLa	Poa labillardieri	Tussock Grass	1200	500	140mm
FiNo	Ficinia nodosa	knobby club-rush	1000	600	140mm
MyPa	Myoporum parvifolium	Carpet Spreading Myoporum	300	1200	140mm
ChrApi	Chrysocephalum apiculatum	common everlasting, yellow buttcc	600	1000	140mm
LeBr	Leucophyta brownii	Cusion bush	100	100	140mm
DoPa	Doryanthes palmeri	Spear Lily	3000	3000	200mm
BrMu	Brachyscome multifida	Cut Leaf Daisy	300	1000	140mm

(E) Endemic to site pre-clearing

(N) Native to Australia



PLANT PALETTE

TREES



Eucalyptus camaldulensis (E)



Lophostemon confertus (N)



Waterhouisia floribunda (N)



Eucalyptus albens (E)



Corymbia torelliana (N)

UNDERPLANTING



Carex appressa (E)



Poa labillardieri (E)



Lomandra confertifolia (E)



Lomandra filiformis (E)



Ficinia nodosa (N)



Leptospermum polygalifolium (E)



Juncus usitatus (E)



Grevillea sericea (N)



Breyenia oblongifolia (E)



Leptospermum scoparium



Westringia fruticosa (N)

PLANT SCHEDULE - WESTERN BOUNDARY VEGETATED CORRIDOR

TREES

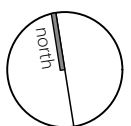
ID	Botanical Name	Common Name	Height	Spread	Pot Size
CoTo	<i>Corymbia torelliana</i>	Cadaghi	20000	15000	45L
EuAl	<i>Eucalyptus albens</i>	White Box	20000	12000	45L
EuCa	<i>Eucalyptus camaldulensis</i>	River Red Gum	20000	15000	45L
LoCo-1	<i>Lophostemon confertus</i>	Brush Box	10000	8000	45L
WaFl	<i>Waterhouisia floribunda</i>	Weeping Lilly Pilly	8000	5500	45L

MASS PLANTING

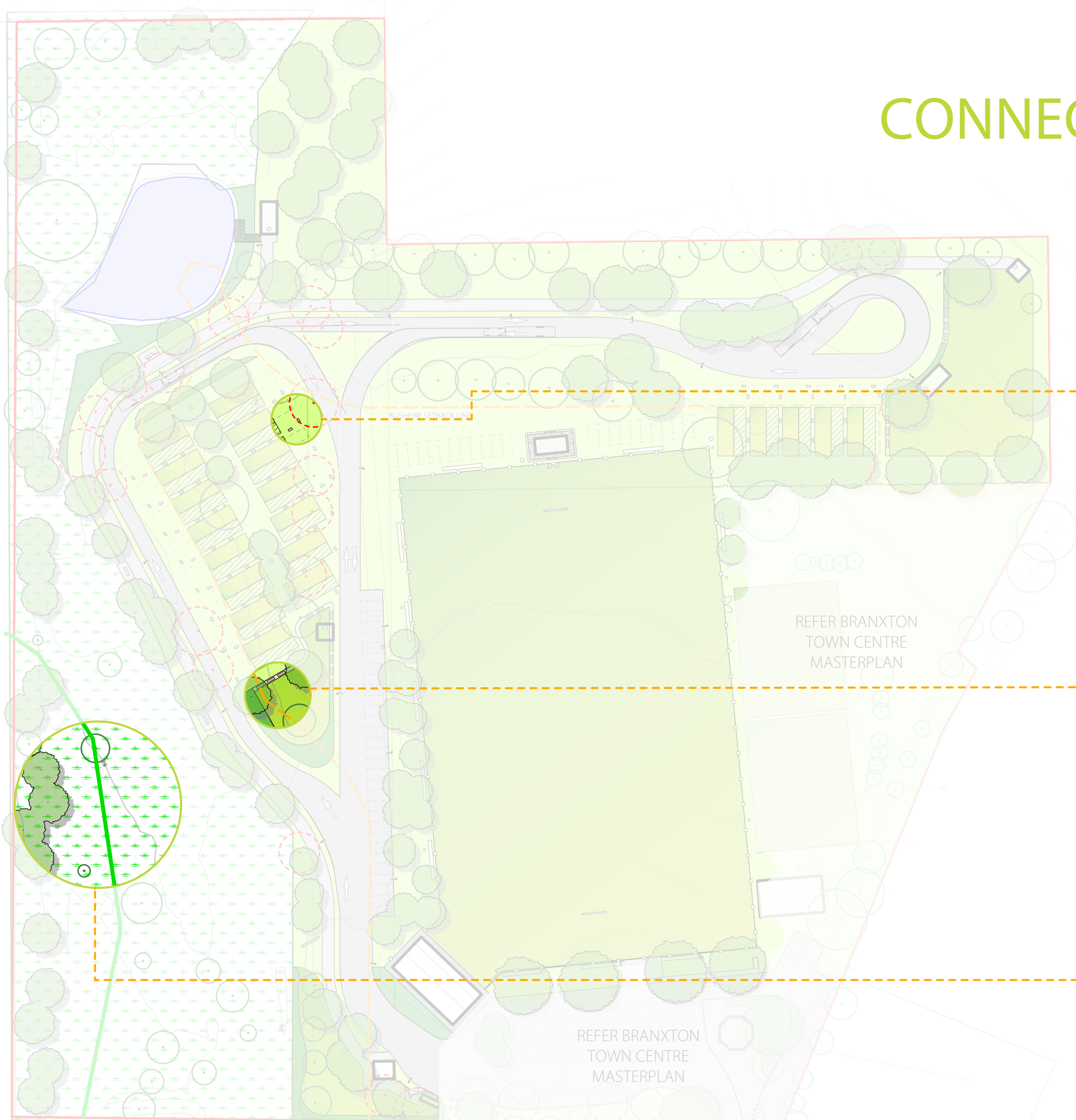
ID	Botanical Name	Common Name	Height	Spread	Pot Size
BrOb	<i>Breyenia oblongifolia</i>	"Coffee Bush, Oblong-leaved Breyenia"	1200	1000	Tube
CaAp	<i>Carex appressa</i>	Tall Sedge	1000	1000	Tube
FiNo	<i>Ficinia nodosa</i>	knobby club-rush	1000	600	Tube
GrSe	<i>Grevillea sericea</i>	Pink Spider Flower	1300	1100	Tube
JuUs	<i>Juncus usitatus</i>	Common Rush	1000	800	Tube
LePo	<i>Leptospermum polygalifolium</i>	"Tantoon, Lemon-Scented Tea Tree"	2500	5500	Tube
LeSc	<i>Leptospermum scoparium</i>	Manuka Myrtle	300	300	Tube
LoCo	<i>Lomandra confertifolia</i>	Mat-rush	1000	1000	Tube
LoFi	<i>Lomandra filiformis</i>	Wattle Mat-rush	500	200	Tube
LoLo	<i>Lomandra longifolia</i>	Spiny-headed Mat-Rush	1000	1000	Tube
PoLa	<i>Poa labillardieri</i>	Tussock Grass	1200	500	Tube
PoSi	<i>Poa sieberiana</i>	Grey tussock Grass	800	750	Tube
WeFr	<i>Westringia fruticosa</i>	Coastal Rosemary	1500	1500	Tube

(E) Endemic to site

(N) Native to Australia



CONNECTION TO COUNTRY



Opportunity for design insertion into site signage and naming.



Opportunity for design insertion into potential artistic element.



Planting of endemic species to establish a sense of place and connection to Country specific to site.

