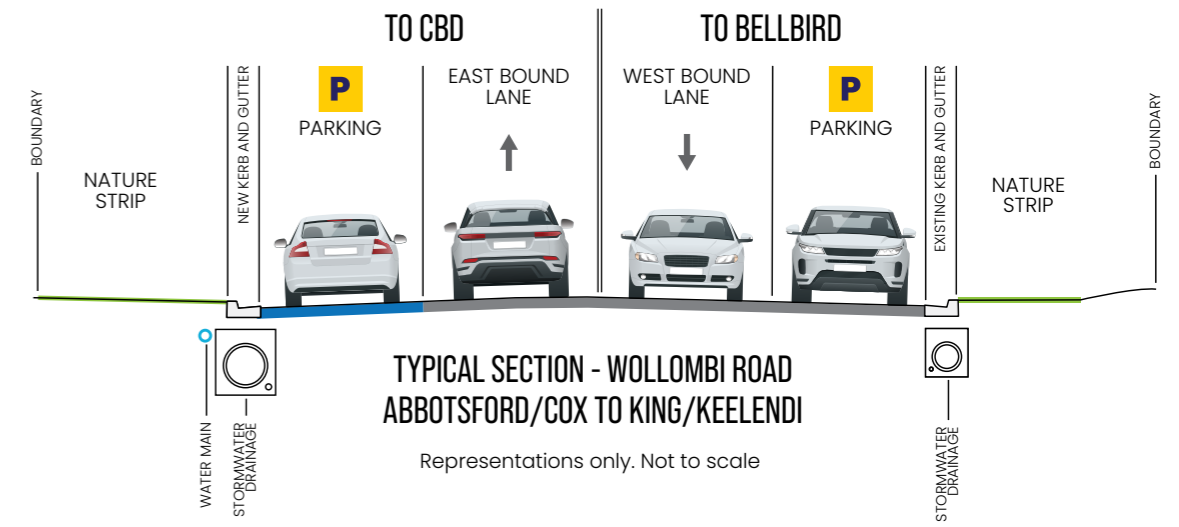


Wollombi Road Design

Abbotsford/Cox to King/Keelendi



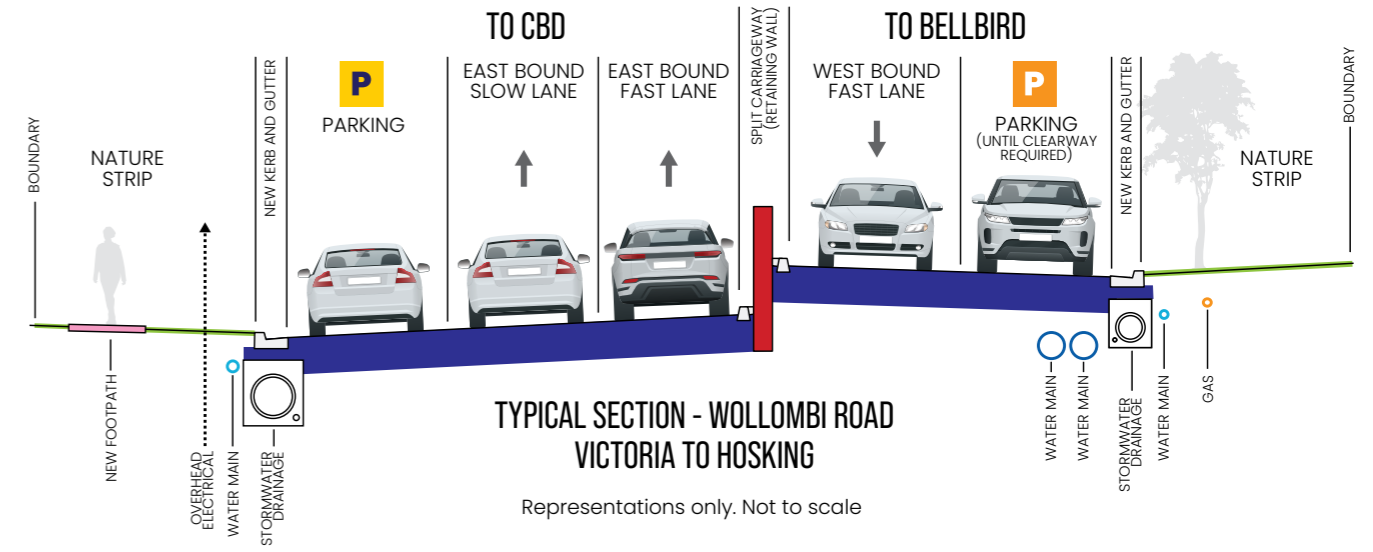
Images are representations and are not to scale.
Elements are subject to change in final detailed design.
Services and service crossings not shown for clarity.

Legend

- | | | | | |
|--------------------------------------|-----------------------------|---|----------------------|---------------------------------|
| Wollombi Road new lane configuration | New footpath/pram ramps | New stormwater channel | Bus stop | Parking |
| Full depth road reconstruction | New kerb and gutter | Existing footpaths | Pedestrian crossings | Parking until clearway required |
| Road resurfacing | Raised median strip | New signalised intersection and street lighting | | |
| New kerb/driveway entrance | Split level separated lanes | | | |

Wollombi Road Design

Victoria to Hosking



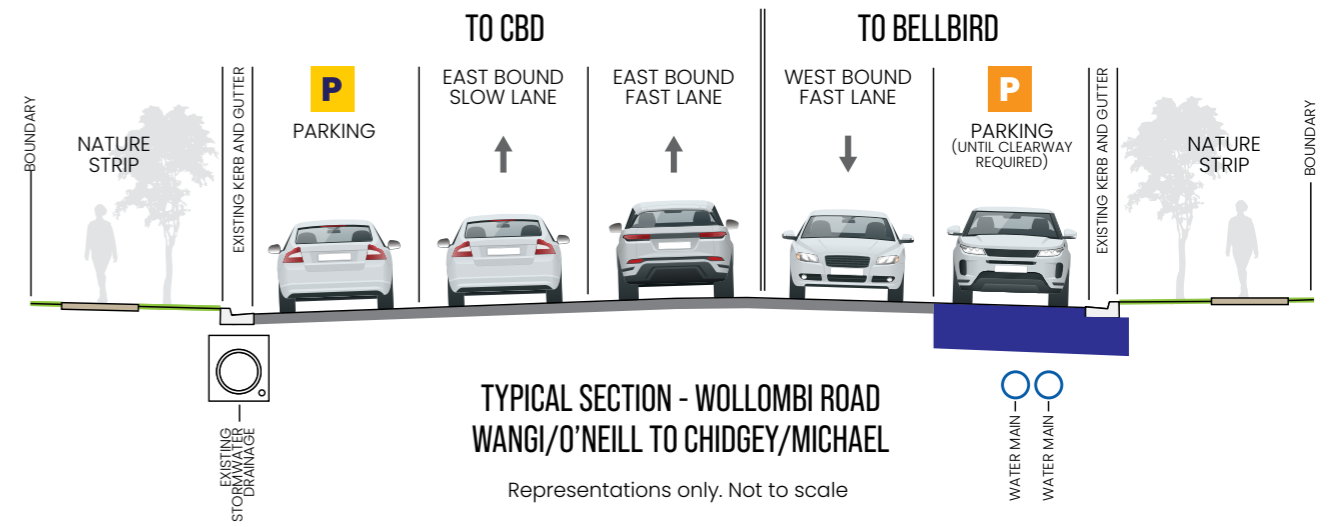
Images are representations and are not to scale. Elements are subject to change in final detailed design. Services and service crossings not shown for clarity.

Legend

- | | | | | |
|--------------------------------------|-----------------------------|---|----------------------|---------------------------------|
| Wollombi Road new lane configuration | New footpath/pram ramps | New stormwater channel | Bus stop | Parking |
| Full depth road reconstruction | New kerb and gutter | Existing footpaths | Pedestrian crossings | Parking until clearway required |
| Road resurfacing | Raised median strip | New signalised intersection and street lighting | | |
| New kerb/driveway entrance | Split level separated lanes | | | |

Wollombi Road Design

Wangi/O'Neill to Chidgey/Michael



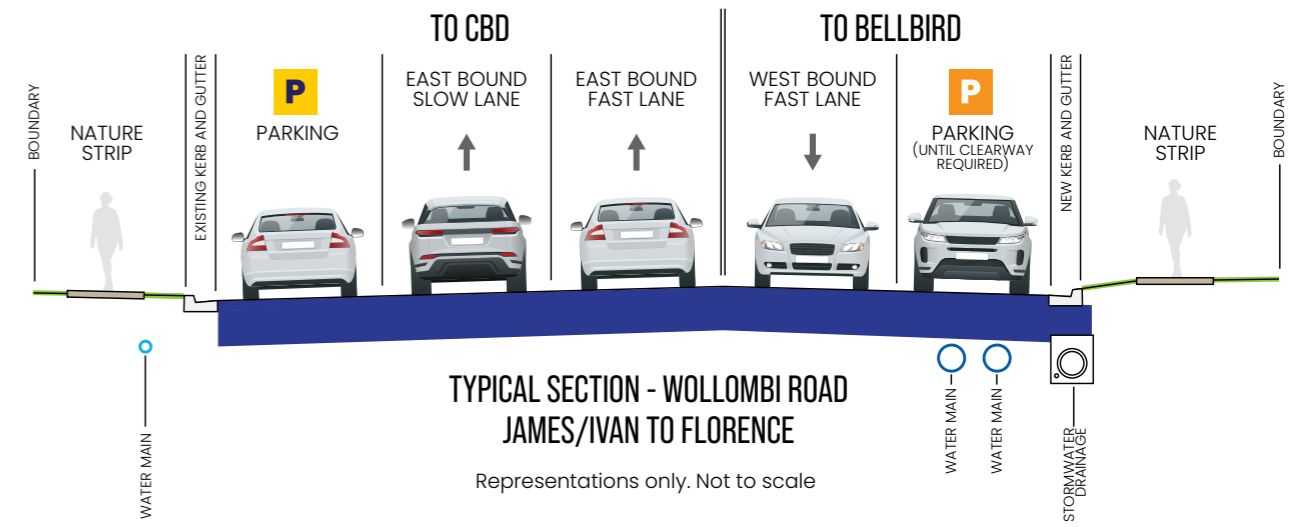
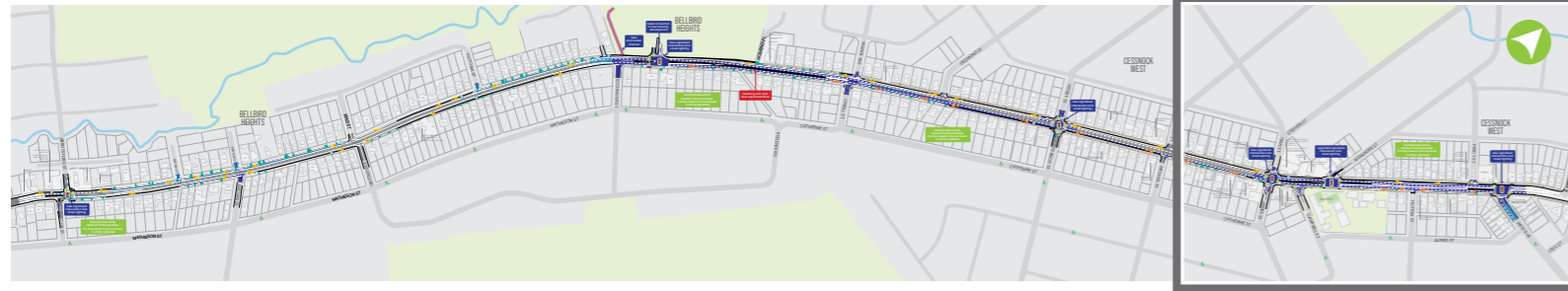
Images are representations and are not to scale. Elements are subject to change in final detailed design. Services and service crossings not shown for clarity.

Legend

- | | | | | |
|--------------------------------------|-----------------------------|---|----------------------|---------------------------------|
| Wollombi Road new lane configuration | New footpath/pram ramps | New stormwater channel | Bus stop | Parking |
| Full depth road reconstruction | New kerb and gutter | Existing footpaths | Pedestrian crossings | Parking until clearway required |
| Road resurfacing | Raised median strip | New signalised intersection and street lighting | | |
| New kerb/driveway entrance | Split level separated lanes | | | |

Wollombi Road Design

James/Ivan to Florence



Images are representations and are not to scale. Elements are subject to change in final detailed design. Services and service crossings not shown for clarity.

Legend

- | | | | | |
|--------------------------------------|-----------------------------|---|----------------------|---------------------------------|
| Wollombi Road new lane configuration | New footpath/pram ramps | New stormwater channel | Bus stop | Parking |
| Full depth road reconstruction | New kerb and gutter | Existing footpaths | Pedestrian crossings | Parking until clearway required |
| Road resurfacing | Raised median strip | New signalised intersection and street lighting | | |
| New kerb/driveway entrance | Split level separated lanes | | | |