



Cessnock to Greta/Branxton

The need for Public Transport Connections

“To unlock the potential of our communities, a robust and efficient public transport system connecting Cessnock to Greta/Branxton is not just a necessity but a catalyst for progress, convenience, and a sustainable future.”

Cessnock to Greta/Branxton: The need for Public Transport Connections

Lack of public transport is a barrier to:

- Education – University of Newcastle and other training providers are located outside Cessnock – 87% of Cessnock Youth surveyed plan to leave the community citing employment and education/study is too hard to access.
- Employment – Industries are stifled by lack of reliable public transport to get workers to jobs. Residents are looking for jobs but can't get there if they lack a drivers licence and reliable vehicle.
- Leisure activities – giving residents and tourists access to nearby experiences raises wellbeing and promotes a healthier lifestyle.
- Social connection (visiting family and friends) – post COVID 19 we need to encourage our residents to connect with family, friends and the community, resulting in an improvement in physical and mental health and an increase in economic benefits.

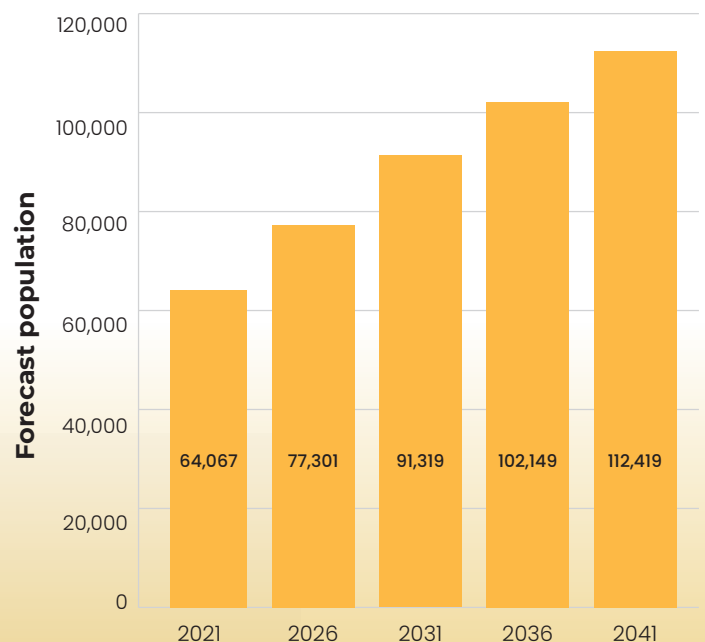


Tourism, Health, Manufacturing and Net Zero

Hunter Valley Wine Country is the most visited wine region in NSW and the oldest surviving commercial wine region. Improved public transport will create a range of business opportunities to leverage the 1.1 million visitors exploring the region every year.

There is a diversity of economic activities in Cessnock City including manufacturing, construction, accommodation, tourism, health care, residential care, training services, agri-business, resource recycling and food services. Cessnock City is home to specialist training in hospitality, viticulture, horticulture, heavy machinery operations and maintenance. There is also substantial growth in beverage manufacturing, construction, health care, accommodation and food services, education and training, public administration, warehousing and net zero initiatives.

Cessnock City Council Population Forecast

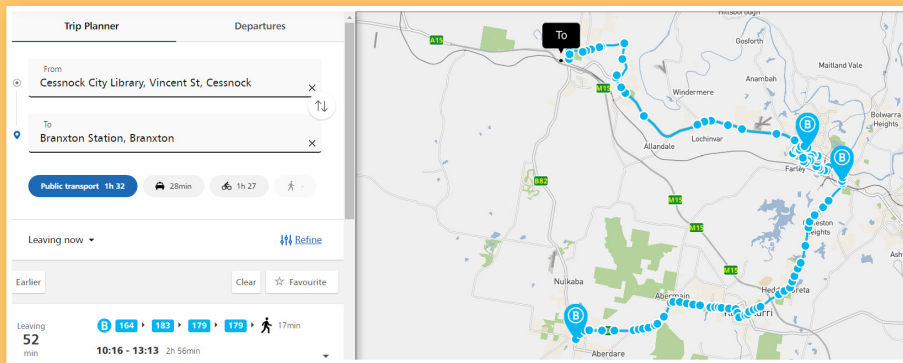
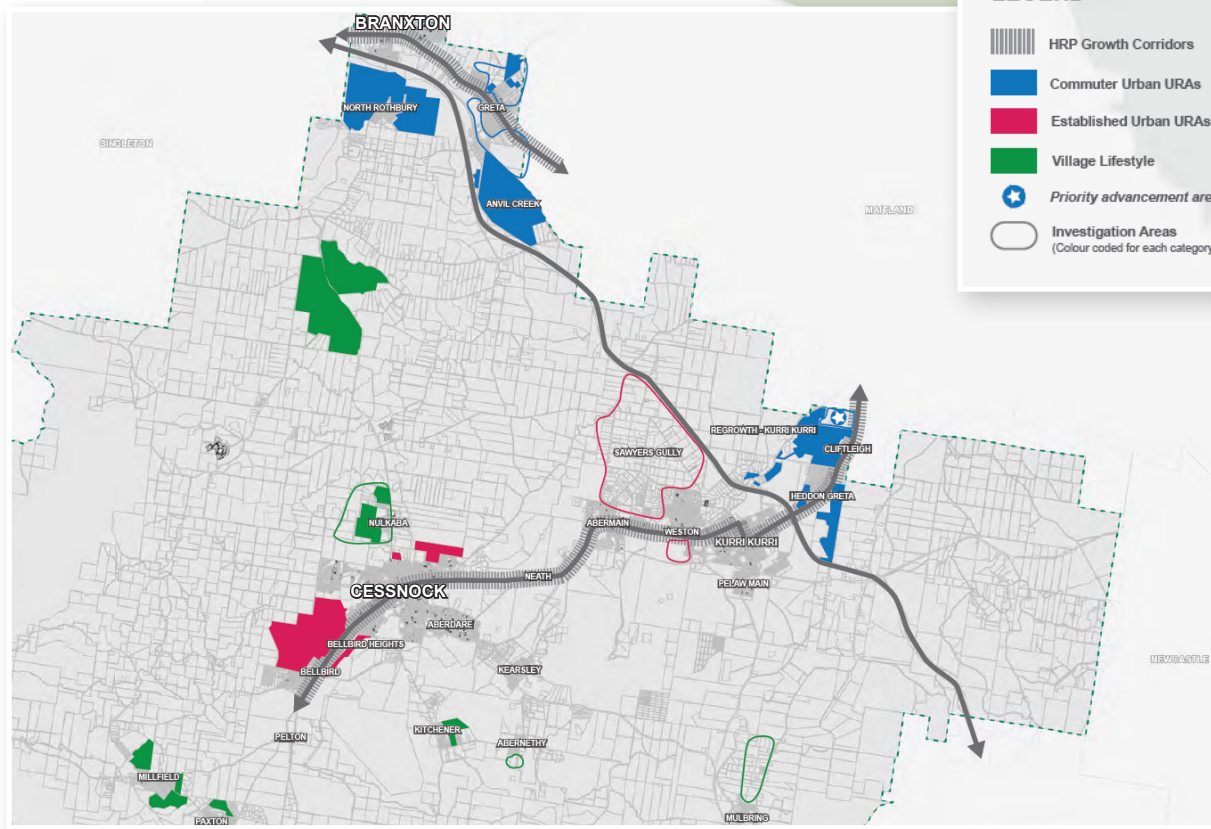


Urban Growth

Urban growth planned for the Cessnock Local Government Area will amplify the existing need for better public transport services to and from Cessnock. Approved developments at Bellbird, Millfield, Paxton, Nulkaba, Pokolbin, North Rothbury, Anvil Creek, Kurri Kurri, Cliftleigh and Heddon Greta will add 32,000 new residents by 2041 taking the total population to **112,419** residents.

New urban growth areas are being investigated at Greta, Sawyers Gully, Nulkaba, Weston, Abernethy, Ellalong and Mulbring. These new urban growth areas will maintain the current population growth beyond 2041.

As the Hunter Region's newest town, Huntlee will be a town of 20,000 residents and with Cessnock township expected to grow from 24,500 to 38,600 people by 2041, a direct transport link is essential to service these two communities.



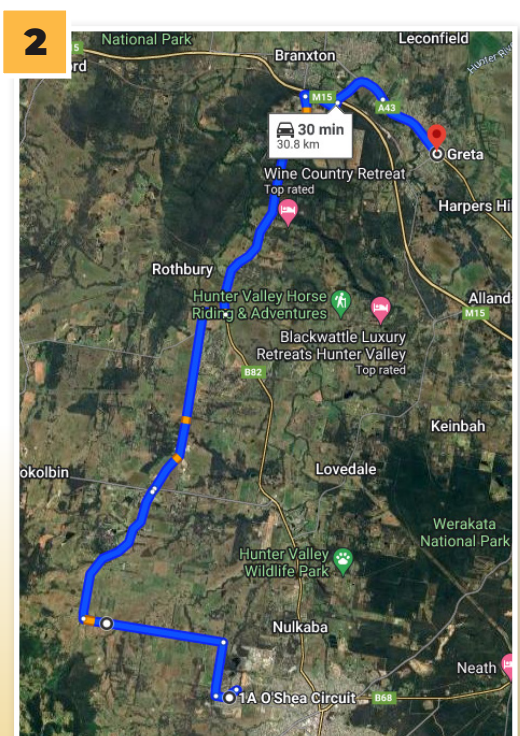
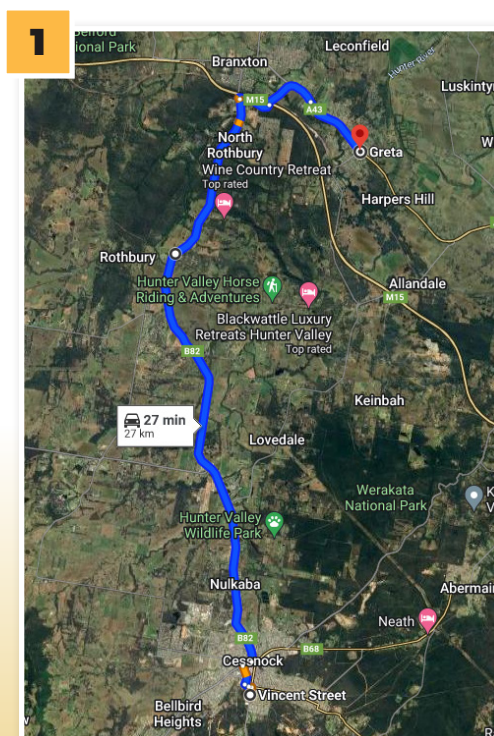
Transport Issue

An example of the challenge is having to travel through a neighbouring LGA taking 1 hr 32 minutes (plus connection waiting times) to get from Vincent Street, Cessnock to Branxton Station, Branxton. This a drive time of 22 minutes.

Proposed Solution

To enable Cessnock LGA residents to travel between Cessnock and North Rothbury/ Branxton in a timely manner, two new public transport routes are proposed:

1. Cessnock to Greta/ Branxton via Wine Country Drive (both directions)
2. Mount View Road, Cessnock to Greta/ Branxton via Oakey Creek Road, McDonalds Rd and Wine Country Drive (both directions)



Outcomes

Outcomes from this proposal include:

- Mount View Road, Cessnock to Greta/Branxton public transport travel times reduced from 2hrs 30minutes to 40 minutes.
- Cessnock CBD to Greta/Branxton public transport travel times reduced from 1hr 30minutes to 40 minutes.
- Route 1 passes 13 major employing businesses, including Calvary Aged Care, Cessnock Correctional Centre, Wine Country Tourist Park, Foghorn Brewery, St Philip's Christian College, Rydges Resort, Cessnock Airport, De Bortoli Wines, Peterson Wines and the Vintage Golf Resort.
- Route 2 passes 34 employing businesses, including The Vintage Golf Resort, Cypress Lakes Golf Resort, First Creek Wines, Hunter Valley Gardens, Bimbadgen Estate, Hope Estate, Leisure Inn, Roche Estate, Mercure Resort, Ben Ean Restaurant, Drayton Family Wines, Voco Kirkton Park, Twine Restaurant, Iron Gate Winery and Kelman Estate.
- Visitors and residents will be able to benefit from the additional bus services.

"This is our opportunity to shape part of the Hunter's economic powerhouse for generations to come."

Benefits in supporting the growth of Greater Cessnock

1. 1,800 new residents each year that will contribute to the Hunter economy
2. 800 houses built every year
3. \$2.0 billion in annual regional exports
4. \$3.6 billion in annual goods transported
5. 8,000 jobs created by 2041
6. 1.1 million visitors exploring our LGA and experiencing all we have to offer



Cessnock City Council



62-78 Vincent Street
Cessnock NSW 2325, Australia



PO Box 152,
Cessnock NSW 2325



Customer Service
02 4993 4100



After Hours Emergency
02 4993 4100



Enquiries
council@cessnock.nsw.gov.au



Website
www.cessnock.nsw.gov.au

DISCLAIMER

Every effort has been made to ensure the accuracy of information herein however Cessnock City Council accepts no responsibility for any consequences resulting from misdescription or inadvertent errors.

Authorised by Cessnock City Council General Manager.